



Royale Heights

Poole, Dorset, BH16

Omar Middleton (45x20)



0800 954 1288

sales@sellmygroup.co.uk



£300,000

Poole, Dorset, BH16

The Omar Middleton bungalow style park home feature a main living space with an 'L' shaped lounge / dining area. The bright and spacious fitted kitchen includes a full array of integrated appliances, and with plenty of cupboard and worktop space, it's practical and functional too. The master bedroom has a walk-in wardrobe providing plenty of hanging space, and a beautiful en-suite with quadrant shower cubical.

The development is incredibly convenient due to easy access into neighbouring towns; Poole, Bournemouth, and Salisbury, as well as surrounding country parks including the New Forest and Hartland Moor National Nature Reserve which offer wonderful walking trails.

The developments location is secluded and peaceful, surrounded by forest, a haven for nature and wildlife. A convenient bus stop is located directly outside and if you are feeling adventurous, why not hop on the Ferry to Sandbanks, close access to the Jurassic Coast and the main ferry terminal to Jersey.

- Brand new home
- Community Living
- Fully Fitted Kitchen
- Fully Furnished
- Gated and secure community
- Over 45's
- Part Exchange Available
- Pets welcome
- RoyaleLife development

2 x  2 x 

**100% Market Value Part
Exchange with
Quickmove Properties**

Home exchange example:

Value of your existing home....£300,000

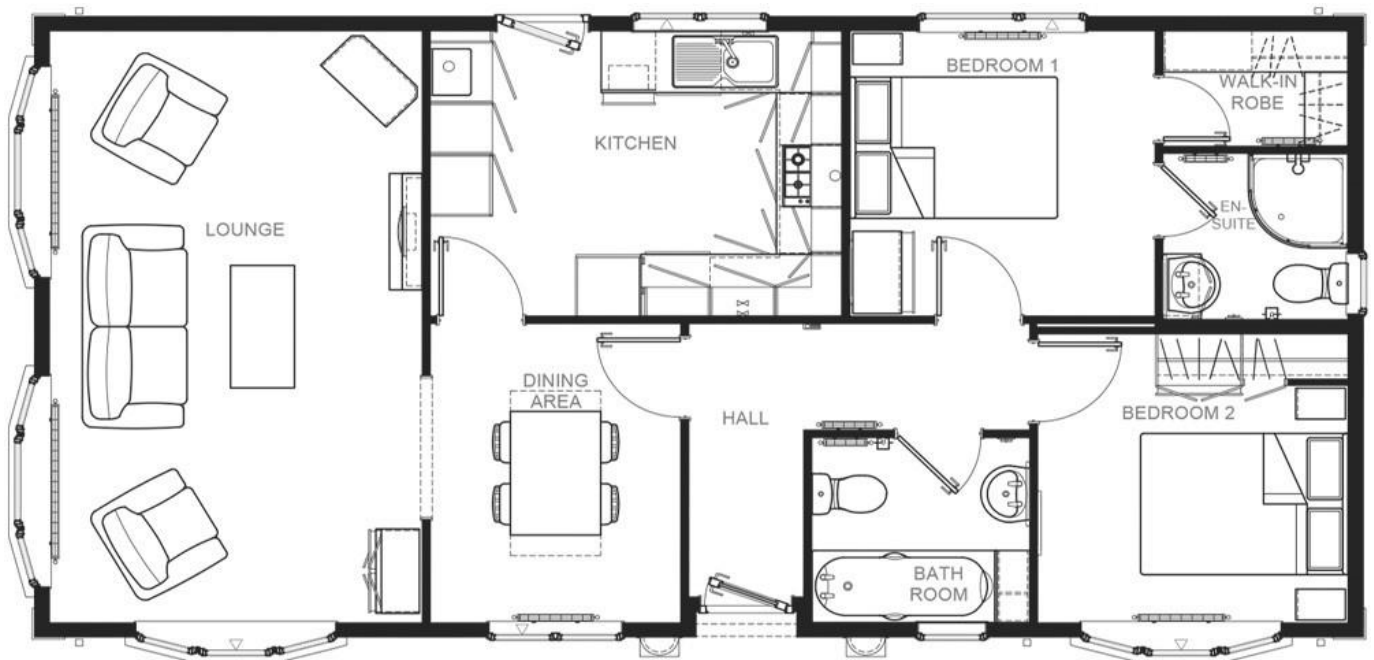
Price of new park home.....£225,000

Cash for you to enjoy.....£75,000



Please note: Stock images have been used, the home on site may vary.

Floor Plan



Middleton 40x20 2DB Cross Lounge

CONTACT DETAILS

0800 954 1288

sales@sellmygroup.co.uk

