



Regency Court

Newton Abbott, Devon, TQ12

Omar Newmarket (42x20)



0800 954 1288

sales@sellmygroup.co.uk



£195,000

Stover, Newton Abbott, Devon, TQ12

In the Omar Newmarket bungalow park home, the lounge and dining area form a L shape and the kitchen is open through to the dining, with a large breakfast bar. The living room is furnished beautifully and the dining area provides plenty of space to accommodate extra guests. A spacious fitted kitchen with integrated appliances provides a wonderful contemporary and bright environment and a large breakfast bar. Through into the bedrooms and practicality and style sit side by side.

This secure, gated development boasts an indoor swimming pool, a coffee lounge and tea gardens. There are many beautiful coastal walks leading directly from the development as well as numerous other pursuits nearby such as fishing, horse riding, cycling, sailing and golf to mention but a few.

Reculver is a village and coastal resort about 3 miles (5 km) east of Herne Bay in southeast England enjoying a beach ideal for those wishing to explore rock pools and fossil hunting. Reculver is also ideal for fishing, bird watching, walking and bike rides as there are some spectacular views. Nearby is Herne Bay, a traditional, friendly seaside town, perfect for families and fun days out.

- Brand new home
- Fully fitted kitchen
- Retirement property
- Over 45s
- Gated and secure community
- Pet-friendly
- 12 month leisure license
- Community living
- Part Exchange available

2x  2x 

**100% Market Value
Part Exchange with
Quickmove Properties**

Home exchange example:

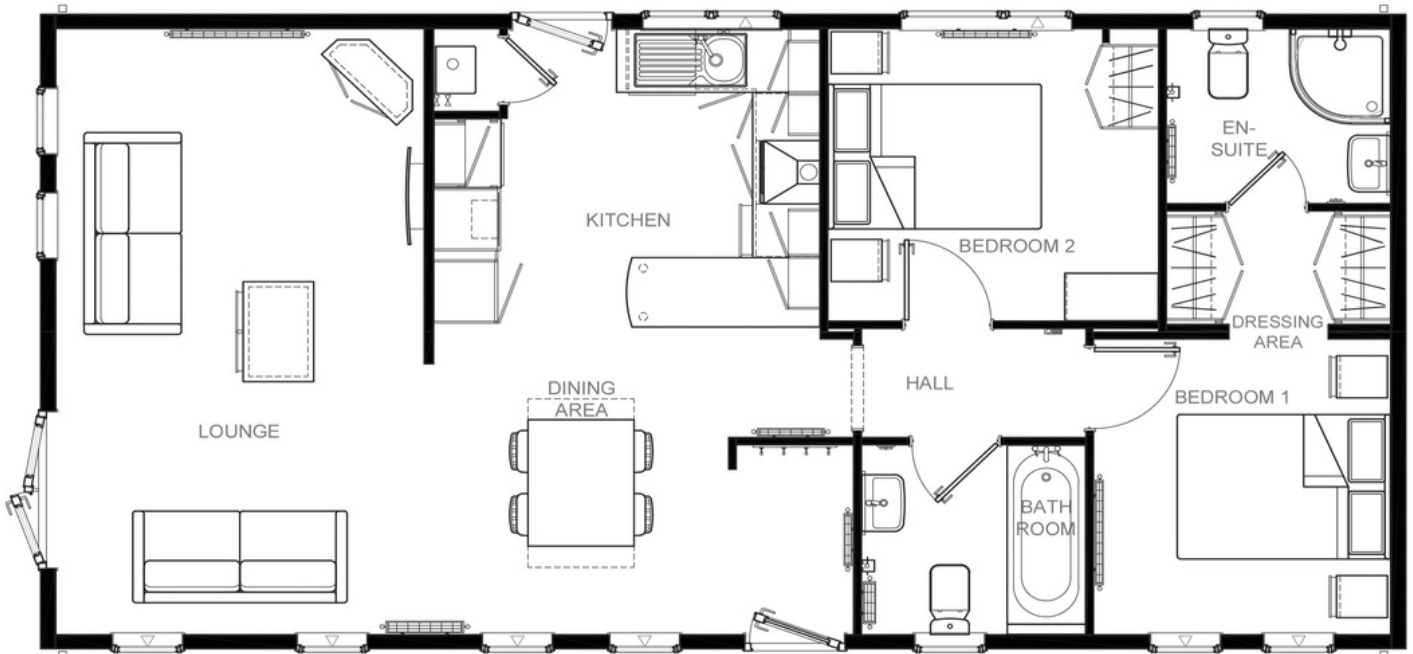
Value of your existing home....£300,000

Price of new park home.....£225,000

Cash for you to enjoy.....£75,000



Floor Plan



Newmarket 40'x20' 2DB

CONTACT DETAILS

0800 954 1288

sales@sellmygroup.co.uk

