



New Forest Glades

Christchurch, Dorset, BH23



0800 954 1288

sales@sellmygroup.co.uk



£325,000

New Forest, Christchurch, Dorset, BH23

This brand new, modern-furnished Wessex luxury park home is perfect for those looking for a detached, easy to maintain, bungalow style retirement property.

This home is set on a brand new bungalow development, within the beautiful location of Hurn, close to Christchurch, Dorset. This park is made up of a safe and welcoming community, designed exclusively for the over 45s. Pets are welcome.

This stunning development offers easy access to the neighbouring towns of Bournemouth and Poole, as well as surrounding country parks including the New Forest and Moors Valley Country Park which offer wonderful walking trails. Enjoy Monday markets, great local food outlets, close proximity to the beach and forest in a highly sought after rural location in Dorset.

Everything you could need is on your doorstep at New Forest Glades from the local shop which is less than a mile away, to the GP surgery only 3 miles away. There are also excellent transport links nearby with the train station only 4 miles away and the bustling town of Bournemouth less than 25 minutes' drive away.

- Brand new home
- Community Living
- Countryside location
- Fully Furnished
- Integrated Appliances
- New Development
- Over 45's
- Part Exchange Available
- Pets welcome

2 x  2 x 

**100% Market Value Part
Exchange with
Quickmove Properties**

Home exchange example:

Value of your existing home....£300,000

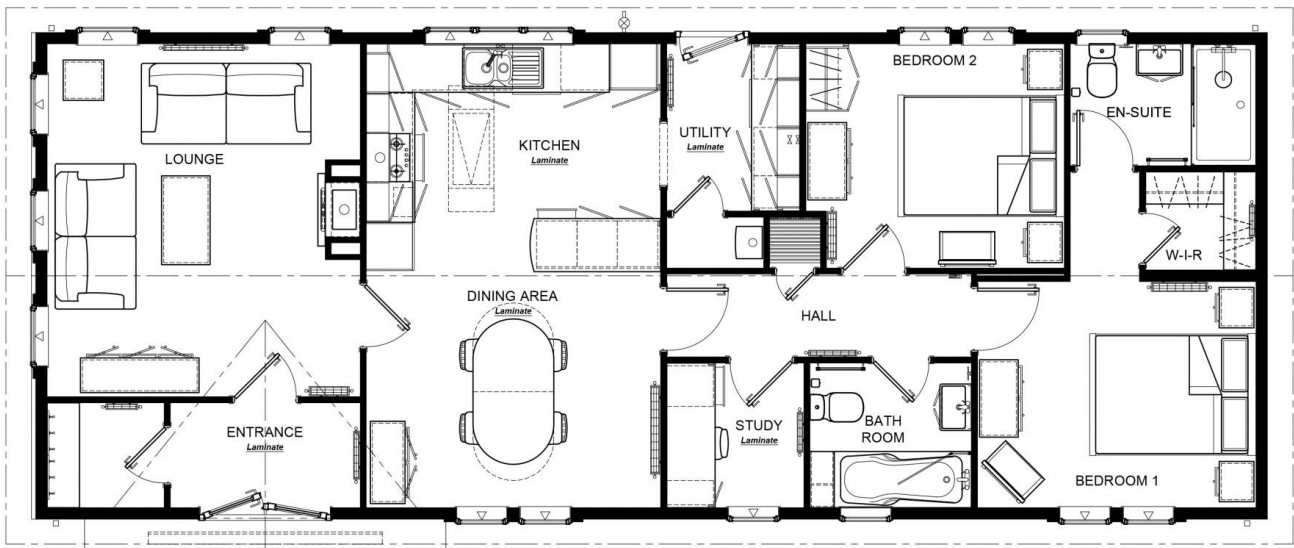
Price of new park home.....£225,000

Cash for you to enjoy.....£75,000



Please note: Stock images have been used, the home on site may vary.

Floor Plan



Canford 50' x 20' 2DB

CONTACT DETAILS

0800 954 1288

sales@sellmygroup.co.uk

