

Windsor, Berkshire, SL4



£239,995



This brand new, fully-furnished Omar Westbury (36'x20') luxury park home is perfect for those looking for a detached, easy to maintain, bungalow-style retirement property. The Westbury is a fully furnished and equipped Park Home which boasts of traditional exteriors and a beautiful interior design.

This superb residential park is a well-established family park that offers the ultimate in residential home living and is ideally located in the Thames Valley, between Ascot, Windsor and Maidenhead and offers a rural retreat that's just a stone's throw from local amenities. The park has no age restriction, and amenities are close by, with a village store at the park entrance and a Tesco a few miles away.

Age restriction: None

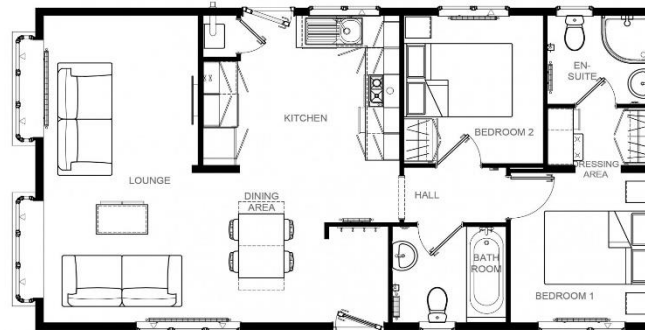
Pet friendly: Yes (One neutered cat only)

Site fees: £230 per month

Residential license

Key Features

- Brand new home
- En suite
- Excellent transport links
- Family park
- Gas central heating
- No age restriction
- Luxury 2 bed park bungalow
- Outstanding location
- Part exchange available
- Community living



Westbury 36' x 20' 2DB



House to sell?

Hassle-free Property Part-Exchange is available from Quickmove Properties, with no estate agent fees, no solicitor's fees and no market uncertainty.

CONTACT US

01793 840917

advice@quickmoveproperties.co.uk

