

Wareham, BH20



£180,000



This brand new, modern-furnished Tingdene Cosgrove luxury park home is perfect for those looking for a detached, easy to maintain, bungalow style retirement property. The landscaped exterior boasts covered large windows, garden area and parking space. The open plan entrance to the kitchen/diner features integrated appliances, venetian blinds, and a glass dining table with four chairs. The master bedroom features a double divan bed with free standing bedside tables and wardrobe space.

The park is located near the River Frome and a surrounding nature reserve. Less than a 10-minute drive away is the historic market town of Wareham which features all the amenities you may need including the high street with many shops, bars and restaurants as well as a garden centre.

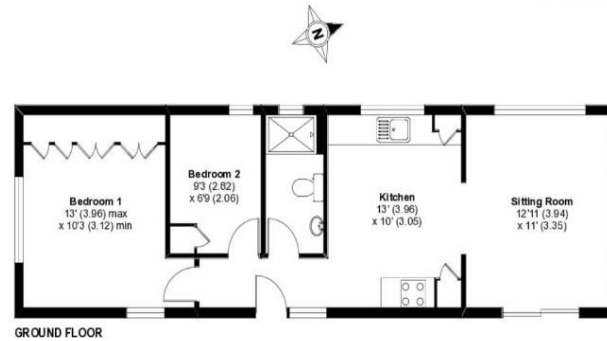
Age restriction: Over 45's
 Site fees: £195 per month
 Pet friendly: Yes
 Residential Licence

Key Features

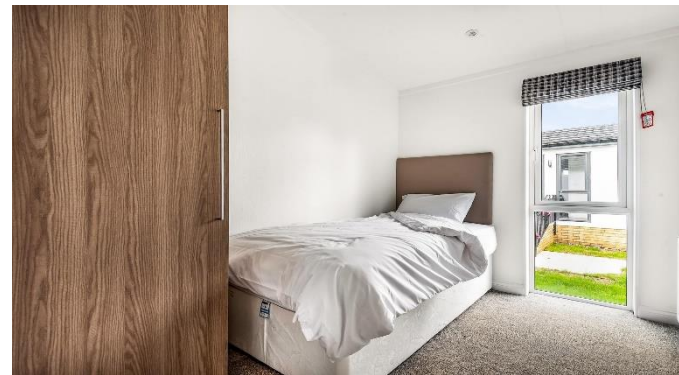
- Brand new home
- Close to the beach
- Community living
- Countryside location
- Fully furnished
- Over 45's
- Part exchange available
- Pets welcome
- RoyaleLife development
- Stamp duty exempt

East Stoke, Wareham, BH20

Approximate Area = 574 sq ft / 53.3 sq m
For identification only - Not to scale



10 Certified Property Measurement
 Floor plan produced in accordance with RICS Property Measurement Standards (previously International Property Measurement Standards) (IPMS) Residential - 2018
 Produced by Property Group Management Company Limited - 1927 729162



House to sell?
 Hassle-free Property Part-Exchange is available from Quickmove Properties, with no estate agent fees, no solicitor's fees and no market uncertainty.

CONTACT US

01793 840917

advice@quickmoveproperties.co.uk

