

# Wareham, BH20

**Quickmove**  
PROPERTIES



£300,000

 x 2

 x 2

This home is perfect for those looking for a detached, easy to maintain, bungalow style retirement property. This park home (45x20) has a spacious living area which is wonderfully light and airy thanks to the home's large windows, and a comfortable lounge suite provides the perfect place to sit back and relax. The open-plan kitchen features a breakfast bar and a full array of integrated appliances.

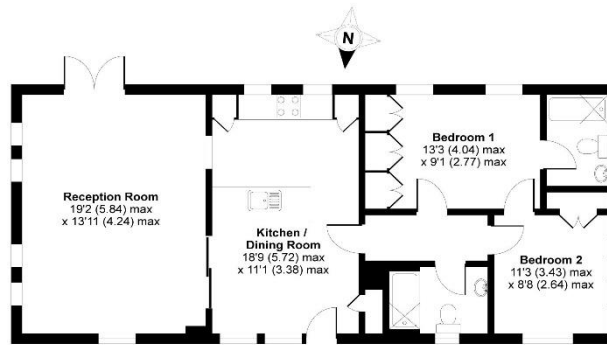
Less than a mile from the development, Bere Regis town centre offers local shops and a post office for your everyday needs as well as a selection of bars and restaurants. Wareham Forest is less than 4 miles away, boasting miles of country walks, cycling trails and picnic spots. Only 25 minutes' away you'll find one of the Jurassic Coast's most iconic locations, Durdle Door.

Age restriction: Over 45s  
 Site fees: £250 per month  
 Pet friendly: Yes (Dogs only)  
 Residential license

### Key Features

- Brand new home
- Dog friendly
- High specification
- Fully fitted kitchen
- Fully furnished
- Rural location
- Gated and secure
- Over 45's
- RoyaleLife development
- Stamp duty exempt

Approximate Area = 856 sq ft / 79.5 sq m  
 For identification only - Not to scale



GROUND FLOOR



### House to sell?

Hassle-free Property Part-Exchange is available from Quickmove Properties, with no estate agent fees, no solicitor's fees and no market uncertainty.

### CONTACT US

01793 840917

advice@quickmoveproperties.co.uk

