

Forden, Welshpool, SY21



£160,000



This brand new, modern furnished Stately park home (40x20) is perfect for those looking for a detached, easy to maintain, bungalow style retirement property. The home features an open plan kitchen/diner area, comfortable living room, two bedrooms and two bathrooms.

The town of Welshpool is just 3 miles from the park, and Shrewsbury and Wrexham are just a short drive away. The banks of the River Severn are a quarter of a mile from the park with idyllic walks in the surrounding countryside.

Age restriction: Over 50's

Pet friendly: Yes

Site fees:

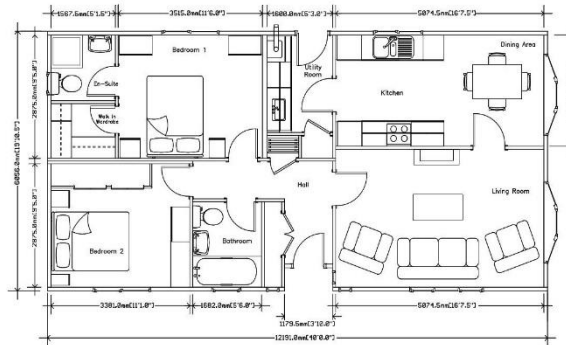
Residential license

Stock images have been used, the home on site may vary.

Key Features

- Brand new home
- Coming soon
- Community living
- Countryside location
- Fully furnished
- Part exchange available
- Pet-friendly
- Residential development
- Shops and amenities nearby

THE TREDEGAR CONTEMPORARY
40' x 20'



House to sell?

Hassle-free Property Part-Exchange is available from Quickmove Properties, with no estate agent fees, no solicitor's fees and no market uncertainty.

CONTACT US

01793 840917

advice@quickmoveproperties.co.uk

Quickmove
PROPERTIES

