

Ringwood, Dorset, BH24



£300,000



This brand new, modern furnished Wessex park home (45x20) is perfect for those looking for a detached, easy to maintain, bungalow style retirement property. The landscaped exterior boasts a vaulted ceiling, large windows, and parking space. The open living space incorporates the living, dining and kitchen areas, the lounge features a set of French doors and a lounge suite with modern furniture. The large master bedroom features tall windows, double bed and en suite.

Set in stunning surroundings, ideal for making the most of the New Forest and Moors Valley Country Park which offer wonderful walking trails. You can enjoy beaches and the stunning Dorset and Hampshire countryside. You can also visit Stonehenge, one of the wonders of the world and the best-known prehistoric monument in Europe.

Age restriction: Over 45's
 Site fees: £250 per month
 Pet friendly: Yes
 Residential License

House to sell?

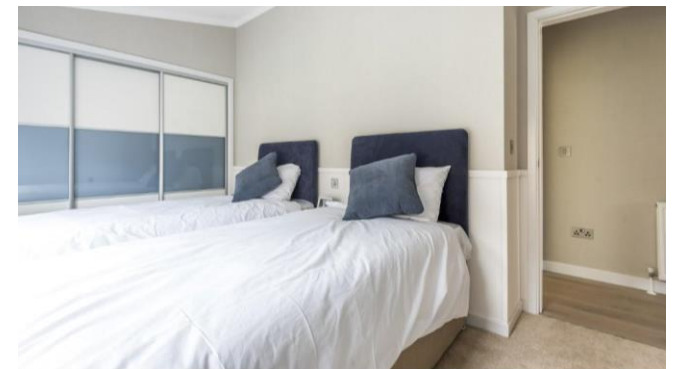
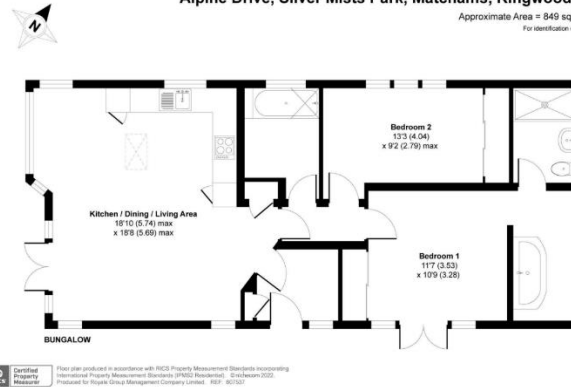
Hassle-free Property Part-Exchange is available from Quickmove Properties, with no estate agent fees, no solicitor's fees and no market uncertainty.

Key Features

- Brand new home
- Community Living
- Part Exchange scheme
- Fully Fitted Kitchen
- Fully Furnished
- Over 45's
- Luxury 2 bed park bungalow
- Outstanding location
- Pet-friendly
- RoyaleLife development

Alpine Drive, Silver Mists Park, Matchams, Ringwood, BH24

Approximate Area = 846 sq ft / 79 sq m
 For identification only - Not to scale.



CONTACT US

01793 840917

advice@quickmoveproperties.co.uk

