

# Downham Market, Norfolk, PE38



£175,000



This home (36x20) is perfect for those looking for a detached, easy to maintain, bungalow style retirement property. The simple yet stylish Newmarket exterior benefits from tall windows to the front of the home, allowing plenty of natural light in and French doors to the lounge area.

On the banks of the River Great Ouse, and dating back to Saxon times, Downham Market is one of Norfolk's oldest market towns. The attractive marketplace is immediately identifiable by the splendidly unusual and majestic black and white clock. The town retains an intimate feel, characterised by many fine historic buildings, craft and collectibles markets - with a bustling market on many Fridays and Saturdays where you can buy a variety of goods from clothes to carpets, to fresh produce - and a host of local independent shops.

Age restriction: Over 45's  
Pet friendly: Yes  
Site fees: £150 per month  
Residential license

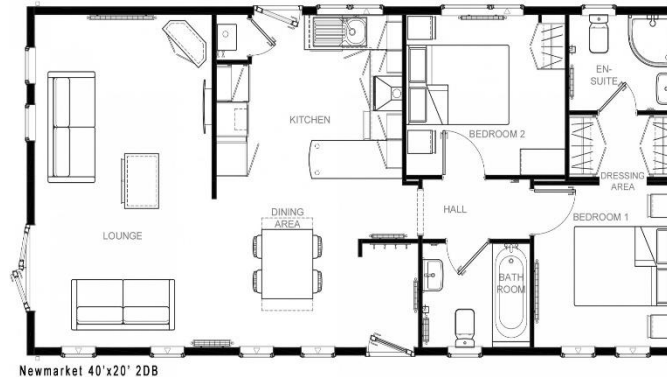
Stock images have been used, the home on site may vary.

### House to sell?

Hassle-free Property Part-Exchange is available from Quickmove Properties, with no estate agent fees, no solicitor's fees and no market uncertainty.

### Key Features

- Brand new home
- Established park
- Fully fitted kitchen
- Luxury 2 bed park bungalow
- Over 45's
- Part exchange available
- Pet-friendly
- Residential park
- Shops and amenities nearby
- Stamp duty exempt



## CONTACT US

01793 840917

[advice@quickmoveproperties.co.uk](mailto:advice@quickmoveproperties.co.uk)

**Quickmove**  
PROPERTIES

