

# Thetford, Norfolk, IP24



£180,000



This brand new, modern-furnished Omar luxury park home (36x20) is perfect for those looking for a detached, easy to maintain, bungalow style retirement property. The lounge is furnished with modern and stylish furniture. The kitchen and dining area features plenty of storage and worktop space with integrated appliances. The double bedrooms feature padded headboards and free-standing bedside tables, the master bedroom has an en suite and fitted wardrobes.

Situated in a peaceful rural location, this development is approximately 8 miles from the excellent facilities, entertainment and shopping offered by Bury St Edmunds and 6 miles from the smaller town of Thetford.

Age restriction: Over 45's

Pet friendly: Yes

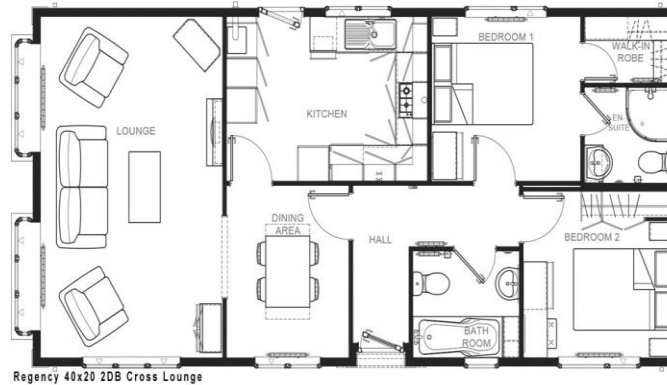
Site fees: £190 per month

Residential license

Stock images have been used, the home on site may vary.

## Key Features

- Brand new home
- Community living
- Countryside location
- Fully fitted kitchen
- Fully furnished
- Over 45's
- Part exchange available
- Pet-friendly
- Retirement property
- Shops and amenities nearby



## House to sell?

Hassle-free Property Part-Exchange is available from Quickmove Properties, with no estate agent fees, no solicitor's fees and no market uncertainty.

## CONTACT US

01793 840917

[advice@quickmoveproperties.co.uk](mailto:advice@quickmoveproperties.co.uk)

**Quickmove**  
PROPERTIES

