

# Staines-upon-Thames, TW18



£625,000



This brand new, fully-furnished Tingdene Havana luxury park home (approx. 900 sq ft) is perfect for those looking for a detached, easy to maintain, bungalow-style retirement property. The home has a modern exterior and beautiful modern interior design. The open plan kitchen area features integrated appliances, the living room features a plush lounge suite, large windows and French doors.

The development is ideally located to offer the best of the stunning surroundings of the River Thames, while still being within easy distance of London and Heathrow Airport. Staines station nearby offers regular routes to London Waterloo and the rest of the country.

Age restriction: Over 45's

Pet friendly: Yes

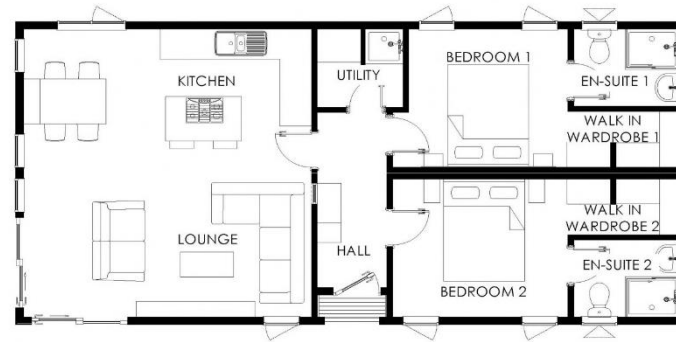
Site fees: £3,000 - £3,400 per year

Residential license:

Stock images have been used, the home on site may vary.

## Key Features

- Brand new home
- Fully furnished
- Garden plot
- Over 45's
- Part exchange available
- Pet-friendly
- Private mooring
- Ready to view
- Riverside development
- Stunning location



### House to sell?

Hassle-free Property Part-Exchange is available from Quickmove Properties, with no estate agent fees, no solicitor's fees and no market uncertainty.

## CONTACT US

01793 840917

[advice@quickmoveproperties.co.uk](mailto:advice@quickmoveproperties.co.uk)

**Quickmove**  
PROPERTIES

