

Christchurch, BH23



£275,000



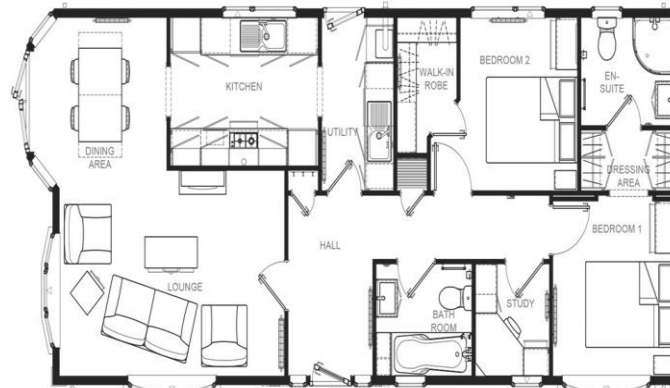
This brand new, modern-furnished Omar luxury park home is perfect for those looking for a detached, easy to maintain, bungalow style retirement property. The interior design is warm and inviting with comfortable sofa and good sized kitchen and dining room. The home has two double bedrooms and two bathrooms.

This stunning development offers easy access to the neighbouring towns of Bournemouth and Poole, as well as surrounding country parks including the New Forest and Moors Valley Country Park which offer wonderful walking trails. There are also excellent transport links nearby with the train station only 4 miles away and the bustling town of Bournemouth less than 25 minutes' drive away.

Age restriction: Over 45's
 Site fees: £225 per month
 Pets-friendly: Yes
 Residential licence

Key Features

- Brand new home
- Community Living
- Countryside location
- Fully Furnished
- Integrated Appliances
- Over 45's
- New development
- Part exchange available
- Pets welcome
- RoyaleLife development



Sandringham 45x20 2DB Utility & Study



House to sell?

Hassle-free Property Part-Exchange is available from Quickmove Properties, with no estate agent fees, no solicitor's fees and no market uncertainty.

CONTACT US

01793 840917

advice@quickmoveproperties.co.uk

