

Three Legged Cross, Dorset, BH21



£220,000



Built in 2020, this RoyaleLife pre-owned detached park bungalow (40'x20') is perfect for those looking for a detached, easy to maintain, bungalow-style retirement property. Boasting an en-suite to the master bedroom, a modern kitchen with integrated appliances, double glazing, gas central heating and a small garden and a driveway.

The home is set within a private 60-acre gated country estate, offering secure lifestyle living for like-minded over 45s. A short distance from this development is the Moors Valley Country Park which provides lots of outdoor pursuits with beautiful walks, cycle paths and a golf course. The nearby market town of Wimborne boasts one of the largest open and covered markets in the south of England.

Age restriction: Over 45's

Pet friendly: Yes

Site fees: £263.38

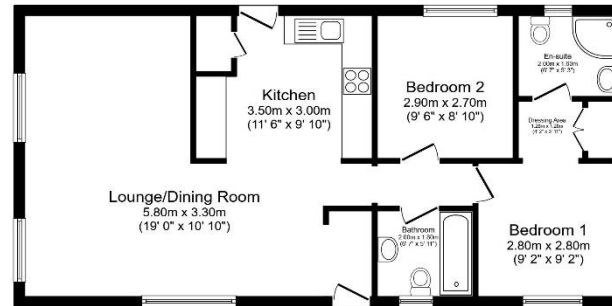
Residential license

House to sell?

Hassle-free Property Part-Exchange is available from Quickmove Properties, with no estate agent fees, no solicitor's fees and no market uncertainty.

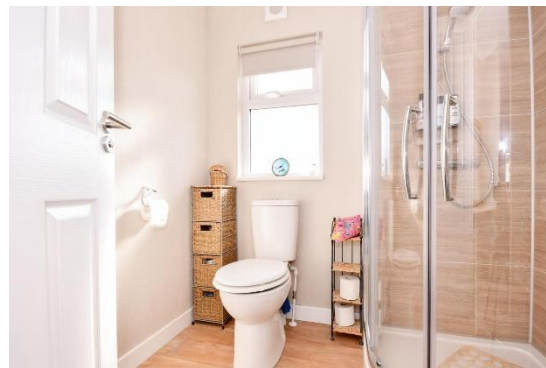
Key Features

- Detached park bungalow
- Double glazing
- Driveway
- En-suite shower room
- Garden space
- Over 45's
- Pre-owned park home
- Private
- Gated development
- Residential park



Total floor area 69.6 sq.m. (749 sq.ft.) approx

This floor plan is for illustrative purposes only. It is not drawn to scale. Any measurements, floor areas (including any total floor area), openings and orientation are approximate. No details are guaranteed. They cannot be relied upon for any purpose and they do not form part of any agreement. No liability is taken for any error, omission or misstatement. A party must rely upon its own inspection(s).
Powered by www.bridgport.com



CONTACT US

01793 840917

advice@quickmoveproperties.co.uk

Quickmove
PROPERTIES

