

Saltburn-by-the-Sea, Cleveland, TS12



£145,950



This brand new, modern-furnished Manor Warkton luxury park home (40x20) is perfect for those looking for a detached, easy to maintain, bungalow style retirement property. This traditionally styled home has two bedrooms and two bathrooms with a spacious lounge/diner and a fully fitted kitchen.

Saltburn by the Sea has maintained much of its original charm as a Victorian seaside resort including the pier, the colourful Italian gardens & walkthrough Riftswood. The Saltburn coastline is recognised as part of the 36 miles of Heritage Coast, crowned by dramatic headlands. The Heritage coast south from Saltburn climbs high above smugglers' secret caves as it continues south towards Whitby.

Age restriction: Over 45s

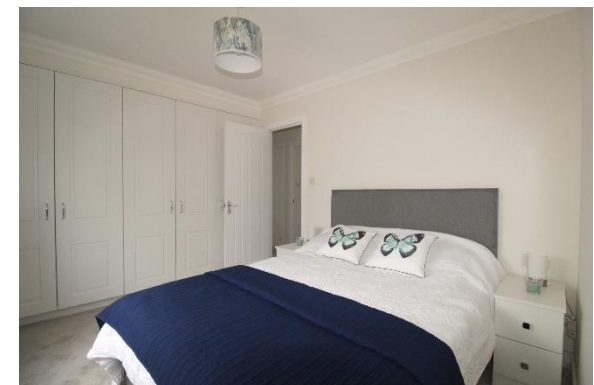
Pet friendly: Yes

Site fees: £164.47

Stock images have been used, the home on-site may vary.

Key Features

- Bus Stop Nearby
- Coastal Location
- Community Living
- En suite
- Exceptionally High Specification
- Garden
- Over 45's
- Part Exchange Available
- Pet-friendly
- Shops Within Walking Distance



House to sell?

Hassle-free Property Part-Exchange is available from Quickmove Properties, with no estate agent fees, no solicitor's fees and no market uncertainty.

CONTACT US

01793 840917

advice@quickmoveproperties.co.uk

