

Hertford, Hertfordshire, SG14

Quickmove
PROPERTIES



£299,000



x 2



x 2

This brand new, modern-furnished park home (42x20) is perfect for those looking for a detached, easy to maintain, bungalow-style retirement property. The home features comfortable living and kitchen area with large windows, modern furniture and two double bedrooms and two bathrooms. The home has a Prestige Anthem exterior and an interior design of the Prestige Sonata, creating a unique and modern home.

The development in a beautiful rural location midway between Stevenage, Hertford and Knebworth in the River Beane Valley. A short walk from the park in the local pub and nearby is the local train station. Hertfordshire is also home to plenty of golf clubs, and Hertford town centre is just 7 miles away. Getting to London from Hertford is easy, it's just 49 minutes by train or an hour and 20 by car.

Age restriction: Over 50s

Pet friendly: Yes

Site fees: £160 per month

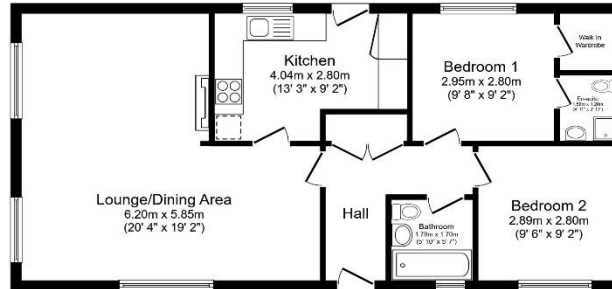
Residential license

House to sell?

Hassle-free Property Part-Exchange is available from Quickmove Properties, with no estate agent fees, no solicitor's fees and no market uncertainty.

Key Features

- Brand new home
- CCTV Security System
- Community Living
- Fully Furnished
- Over 50's
- Part Exchange Available
- Pets welcome
- Private
- Gated Development
- Residential Development



Total floor area 72.2 sq.m. (778 sq.ft.) approx.

This floor plan is for illustrative purposes only. It is not drawn to scale. Any measurements, floor areas (including any total floor area), openings and orientation are approximate. No details are guaranteed, they cannot be relied upon for any purpose and they do not form part of any agreement. No liability is taken for any error, omission or misstatement. A party must rely upon its own inspections. Powered by www.floorplans.com



CONTACT US

01793 840917

advice@quickmoveproperties.co.uk

Quickmove
PROPERTIES

