

Silloth, Cumbria, CA7

Quickmove
PROPERTIES



£149,500



This brand new, modern-furnished park home (40x20) is perfect for those looking for a detached, easy to maintain, bungalow-style retirement property. The Clearwater is an attractive home that showcases classic styling, top quality features and an open plan layout. The homes in this park also have optional garages.

The park is set on tranquil grounds only 100m from the sea in the coastal town of Silloth-on-Solway, just a short drive from the Lake District, with its picturesque lakes, idyllic villages, and high moorlands.

Age restriction: Over 50s

Pet friendly: Yes

Site fees: £190 per month

Residential license

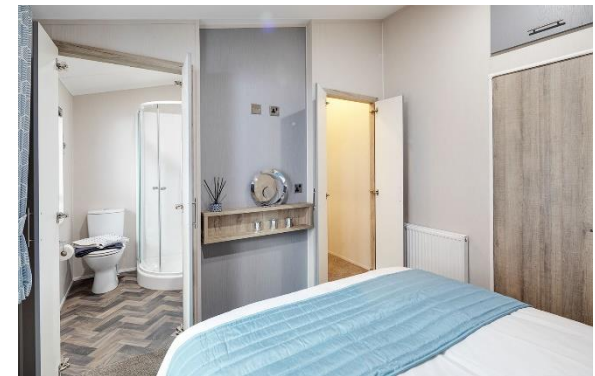
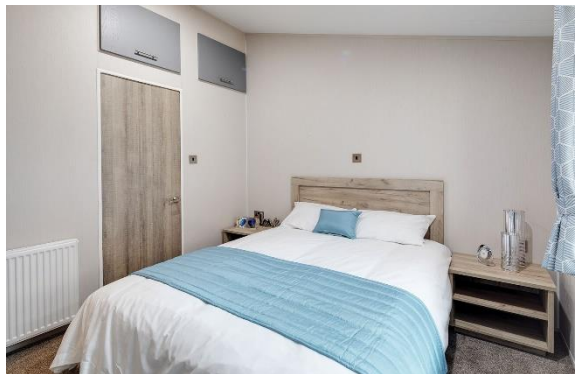
Stock images have been used, the home on-site may vary.

House to sell?

Hassle-free Property Part-Exchange is available from Quickmove Properties, with no estate agent fees, no solicitor's fees and no market uncertainty.

Key Features

- Brand new home
- Community Living
- En suite
- Established Park
- Fully Furnished
- Short drive to the coast
- Gated and secure community
- Over 50's
- Part Exchange Available
- Pets welcome



CONTACT US

01793 840917

advice@quickmoveproperties.co.uk

Quickmove
PROPERTIES

