

Wilmcote, Warwickshire, CV37

Quickmove
PROPERTIES



£195,000



This brand new, modern-furnished Omar Regency (38'x20') luxury park home is perfect for those looking for a detached, easy to maintain, bungalow-style property. The home has parking for 2 cars and features a fully fitted kitchen with integrated appliances, a comfortable living area, two bedrooms and two bathrooms.

This delightful residential development featuring 47 homes is located one minute's walk from the village of Wilmcote. The residents' social club on site organises day trips and meals out for any resident that would like to join. Wilmcote is home to Mary Arden's house and a handful of old Elizabethan pubs. You can also find amenities here including a post office, church, tea rooms and a fish and chip shop. Wilmcote is 4 miles from Stratford Upon Avon with all large town facilities and amenities.

Age restriction: Over 50s

Pet friendly: No

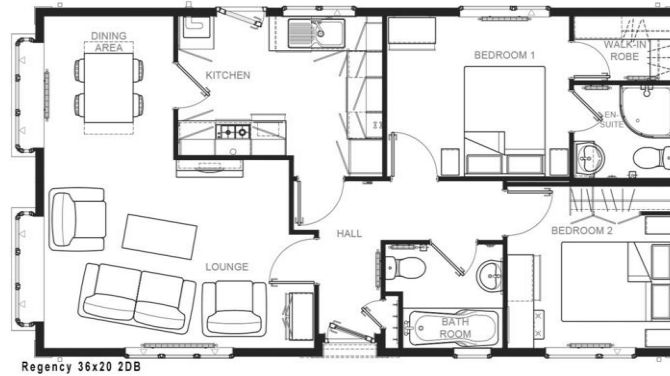
Site fees: £180 per month

Residential licence

Stock images have been used, the home on-site may vary.

Key Features

- Brand new home
- Bus Stop Nearby
- Community Living
- Fully Fitted Kitchen
- Fully Furnished
- Village location
- Over 50's
- Part Exchange Available
- Residential Development
- Shops and amenities nearby



House to sell?

Hassle-free Property Part-Exchange is available from Quickmove Properties, with no estate agent fees, no solicitor's fees and no market uncertainty.

CONTACT US

01793 840917

advice@quickmoveproperties.co.uk

Quickmove
PROPERTIES

