

# Clacton-on-Sea, Essex, CO16



£193,800



This brand new, modern-furnished Pathfinder Retreat (42'x20') luxury lodge is perfect for those looking for a detached, easy to maintain, bungalow-style leisure property. The landscaped exterior boasts a large decking, the interior includes two bedrooms, one family bathroom, one en-suite shower room, a large open plan kitchen with breakfast bar and integrated appliances and comfortable living space.

This 11-month leisure development is set in 25 acres of beautiful countryside, with a well-stocked fishing lake and an on-site cafe. The natural sloping terrain of the park creates an attractive and interesting terraced landscape. The park is located in Weeley, a small village in Essex. The region is steeped in history and is just a few miles away from the Roman town of Colchester - Britain's oldest recorded town.

Age restriction: None

Pet friendly: Yes (2 per home)

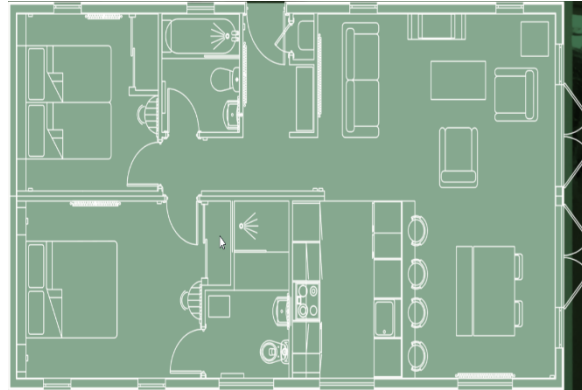
Site fees: £4047 per year

11-month leisure license

Stock images have been used, the home on site may vary.

### Key Features

- 11-month holiday license
- 25 acres
- Brand new home
- Cafe on site
- Countryside location
- Family owned development
- Fishing lakes
- Fully furnished
- Gated development
- Pet-friendly



### House to sell?

Hassle-free Property Part-Exchange is available from Quickmove Properties, with no estate agent fees, no solicitor's fees and no market uncertainty.

### CONTACT US

01793 840917

advice@quickmoveproperties.co.uk

