

# Swanage, Dorset, BH19

**Quickmove**  
PROPERTIES



£277,500

 x 2

 x 2

This brand new, modern-furnished Willerby Hazlewood (36'x20') luxury park home is perfect for those looking for a detached, easy to maintain, bungalow style retirement property. The home features bay windows, two bedrooms. The master bedroom includes an en suite and the kitchen includes integrated appliances.

Swanage is a quintessential small seaside town on the Isle of Purbeck which is part of the Jurassic Coast, England's first Natural World Heritage Site and adjacent to the golden sands of Studland Beach and Shell Bay, part of a larger National Trust Estate which also includes Corfe Castle and Kingston Lacy House.

Age restriction: Over 50s

Pet friendly: Yes (2 per home)

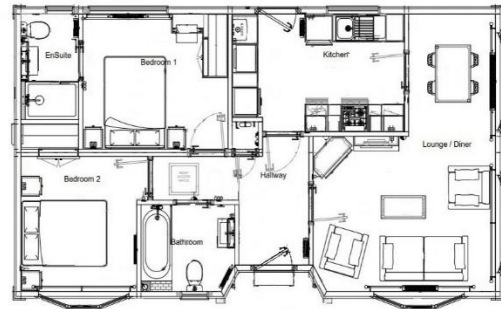
Site fees: £217 per month

Residential license

Stock images have been used, the home on-site may vary.

### Key Features

- 15-minute walk from beach
- Bay windows
- Brand new home
- Exceptionally High Specification
- Fully Furnished
- Lounge with fireplace
- Over 50's
- Part Exchange Available
- Residential Park
- Retirement Property



### House to sell?

Hassle-free Property Part-Exchange is available from Quickmove Properties, with no estate agent fees, no solicitor's fees and no market uncertainty.

### CONTACT US

01793 840917

[advice@quickmoveproperties.co.uk](mailto:advice@quickmoveproperties.co.uk)

