

# Loddon Court, Reading, Berkshire, RG7

**Quickmove**  
PROPERTIES



£295,000





This pre-owned, modern Tingdene Barnwell (44'x22') luxury park home is perfect for those looking for a detached, easy to maintain, bungalow-style property. This well-maintained home features a modern, fitted kitchen and a spacious living room with French doors. There are two double bedrooms, the master includes a walk-in wardrobe and an en suite.

This friendly and welcoming park for over 45's is surrounded by beautiful open countryside, edging on the village of Spencers Wood, creating a wonderful and peaceful environment. The park is only a few miles south of the bustling town of Reading, approximately 5 miles away. Nearer to home the village of Spencers Wood is approximately 1 mile from the park providing amenities including a post office, a convenience store with newsagents and off license, garage, bakery, salon and restaurant.

Age restriction: Over 45s

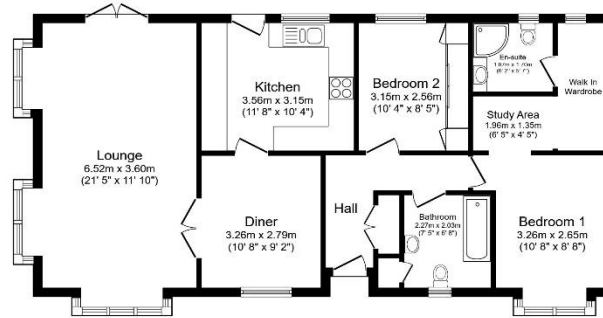
Pet friendly: Yes (2 per home)

Site fees: £201.58 per month

Residential license

## Key Features

- Built in 2016
- Countryside Walks
- Garage and Driveway
- Garden space
- Modern design
- Over 45's
- Part Exchange Available
- Pet-friendly
- Residential Development
- Two Bedrooms



Total floor area 88.5 sq.m. (953 sq.ft.) approx.

This floor plan is for illustrative purposes only. It is not drawn to scale. Any measurements, floor areas (including any total floor area), openings and orientation are approximate. No details are guaranteed. They cannot be relied upon for any purpose and they do not form part of any agreement. No liability is taken for any error, omission or misstatement. A party must rely upon its own inspections. Powered by www.foretagent.com



## CONTACT US

01793 840917

advice@quickmoveproperties.co.uk

**Quickmove**  
PROPERTIES

