

Royale Heights, Poole, Dorset, BH16

Quickmove
PROPERTIES



£290,000

 x 2

 x 2

This pre-owned park bungalow (40'x20') is perfect for those looking for a detached, easy to maintain, bungalow style property. The home features a modern kitchen, a separate living area, two double bedrooms and two bathrooms. The exterior features a rear patio area and parking space.

Royale Heights is an elevated development offering secluded and peaceful living for like-minded people. It is located with easy access to neighbouring towns; Poole, Bournemouth, and Salisbury, as well as surrounding country parks including the New Forest and Hartland Moor National Nature Reserve which offer wonderful walking trails. A bus stop is located directly outside the park and if you are feeling adventurous, why not hop on the Ferry to Sandbanks, close access to the Jurassic Coast and the main ferry terminal to Jersey.

Age restriction: Over 45s

Pet friendly: Yes (2 per home)

Site fees: £3039 per year

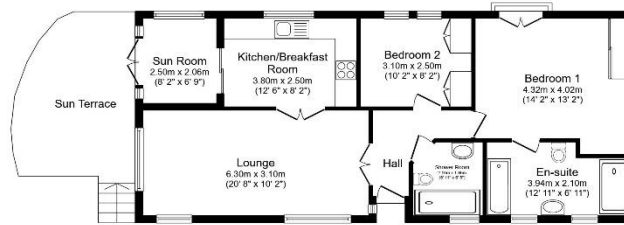
Residential license

House to sell?

Contact Quickmove for a free, no-obligation Part-Exchange valuation on this home. Enjoy a hassle-free move, with no estate agents' fees or solicitors to pay. You even get to keep the keys to your existing property for 2 weeks after completion, so you can move out at your leisure.

Key Features

- Bus Stop Nearby
- Community Living
- Over 45's
- Part Exchange Available
- Pet-friendly
- Rear Patio
- Pre-owned park home
- Prestigious RoyaleLife development
- Private
- Gated Development



Total floor area 94.0 sq.m. (1,012 sq.ft.) approx
This floor plan is for illustrative purposes only. It is not drawn to scale. Any measurements, floor areas (including any total floor area), openings and orientation are approximate. No details are guaranteed, they cannot be relied upon for any purpose and they do not form part of any agreement. No liability is taken for any error, omission or misstatement. A party must rely upon its own inspection(s). Powered by www.floorplans.com



CONTACT US

01793 840917

advice@quickmoveproperties.co.uk

