

Chertsey, Surrey, KT16



£325,000



This brand new, modern-furnished Lesko Canterbury (40'x20') luxury park home is perfect for those looking for a detached, easy to maintain, bungalow-style property. The home features two double bedrooms, an en-suite and a family bathroom. There is a fully fitted, modern kitchen and a spacious living and dining area.

This is one of the largest residential parks for the over 50's, with a strong community spirit and a thriving social club. A regular bus service goes from the park to Chertsey and Staines, both provide excellent shopping facilities. A health centre can be found at Chertsey, which can be reached by a walk across the local golf course if you wish

Age restriction: Over 50s

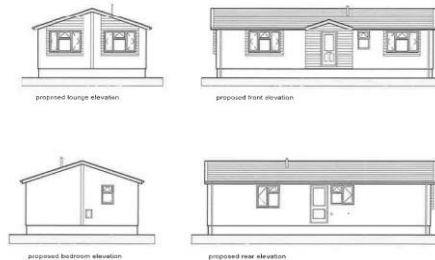
Pet friendly: Yes (2 per home)

Site fees: £241 per month

Residential home

Key Features

- Coming soon
- Communal Bar Area
- Community Living
- Fully Fitted Kitchen
- Fully Furnished
- Luxury 2 Bed Park Bungalow
- Over 50's
- Part Exchange Available
- Retirement Property



House to sell?
 Contact Quickmove for a free, no-obligation Part-Exchange valuation on this home. Enjoy a hassle-free move, with no estate agents' fees or solicitors to pay. You even get to keep the keys to your existing property for 2 weeks after completion, so you can move out at your leisure.

CONTACT US

01793 840917

advice@quickmoveproperties.co.uk

