

Chelmsford, Essex, CM3

Quickmove
PROPERTIES



£230,000



x 2



x 2

This brand new, modern-furnished Willerby Hazlewood (36'x20') luxury park home is perfect for those looking for a detached, easy to maintain, bungalow-style property. The home features fully fitted kitchen with integrated appliances, a comfortable living area, and two double bedrooms. The master bedroom has an en suite.

The riverside village of Althorne, overlooking the river Crouch is the lovely setting for this park, 15 miles from Chelmsford and 3 miles from Burnham-on-Crouch. Sailing, fishing and a boat marina are available locally, with several good golf clubs. The village of Althorne has a post office and general store. Burnham-on-Crouch has a good sized supermarket and doctor and dentist. It is very popular with retired or semi-retired persons who want to lead an active life.

Age restriction: Over 50s

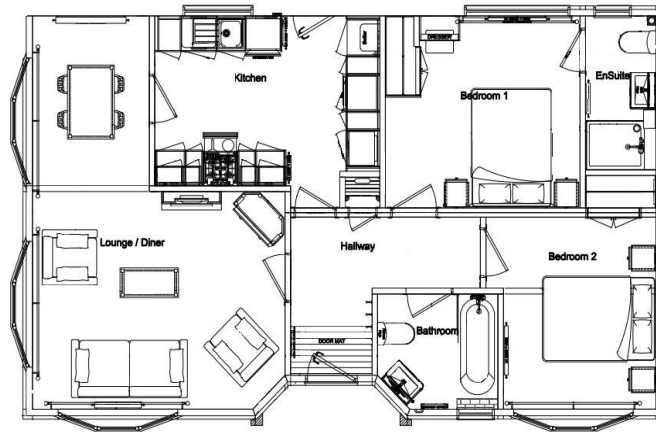
Pet friendly: TBC

Site fees (at time of listing): £196.00 per month

Residential license

Key Features

- Available for early occupation
- Brand new home
- Community Living
- Fully Furnished
- No pets
- Outstanding Location
- Over 50's
- Part Exchange Available
- Residential Park
- Stamp Duty Exempt



House to sell?

Hassle-free Property Part-Exchange is available from Quickmove Properties, with no estate agent fees, no solicitor's fees and no market uncertainty.

CONTACT US

01793 840917

advice@quickmoveproperties.co.uk

Quickmove
PROPERTIES

