

Penton Park, Chertsey, Surrey, KT16

Quickmove
PROPERTIES



£265,000



This pre-owned park home (38'x20') is perfect for those looking for a detached, easy to maintain, bungalow-style property. The home features a kitchen with a separate living and dining room. There are two double bedrooms and a garden area with a parking bay and garden shed.

Penton Park is one of the largest residential parks with a strong community spirit and a thriving social club. A regular bus service goes from the park entrance to Chertsey and Staines, both provide excellent shopping facilities. A health centre can be found at Chertsey, which can be reached by a walk across the local golf course if you wish. The M25 is only a short drive away and for commuters to London, there is a mainline station at Staines, reaching Waterloo in 30 minutes.

Age restriction: Over 50s

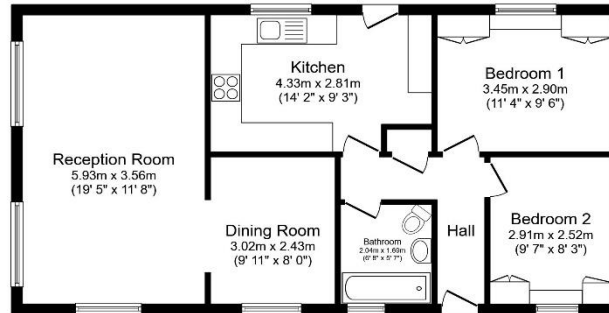
Pet friendly: 2 per home

Site fees: £241 per month

Residential license

Key Features

- Community Living
- Garden Shed
- Garden space
- Over 50's
- Parking Space
- Bus stop at park entrance
- Pet-friendly
- Pre-owned park home
- Residential Development
- Two Bedrooms



Total floor area 68.3 sq.m. (735 sq.ft.) approx

This floor plan is for illustrative purposes only. It is not drawn to scale. Any measurements, floor areas (including any total floor areas), openings and orientation are approximate. No details are guaranteed. They cannot be relied upon for any purpose and they do not form part of any agreement. No liability is taken for any error, omission or misstatement. A party must rely upon its own Inspector(s). Powered by www.floorplans.com



House to sell?
 Contact Quickmove for a free, no-obligation Part-Exchange valuation on this home. Enjoy a hassle-free move, with no estate agents' fees or solicitors to pay. You even get to keep the keys to your existing property for 2 weeks after completion, so you can move out at your leisure.

CONTACT US

01793 840917

advice@quickmoveproperties.co.uk

