

# Palm Court, Wickford, Essex, SS11



£220,000



This pre-owned, modern Omar Middleton (40'x20') luxury park home is perfect for those looking for a detached, easy to maintain, bungalow-style property. The home has a private garden area and a driveway. Built in 2018, the home has a spacious kitchen with a separate utility room, dining area and living room, a study, two double bedrooms, an en suite and a family bathroom.

The park is located alongside the River Crouch and the edge of Battlesbridge village in Essex which provides local amenities including shops and a train station. The southeast coast is a short drive away, with Shoebury Common Beach just 16 miles away and the Dengie National Nature Reserved just 19 miles away.

Age restriction: Over 55s

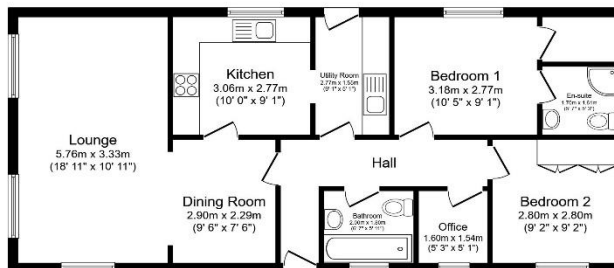
Pet friendly: Yes

Site fees (at time of listing): £403.61 per month (£367.26 rent and £36.35 water charge)

Residential license

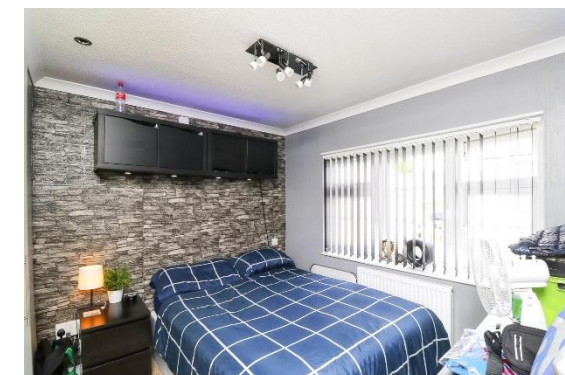
## Key Features

- Built in 2018
- Garden space
- Modern Fitted Kitchen
- Over 55's
- Parking Space
- Part Exchange Available
- Pre-owned park home
- Study
- Two Double Bedrooms
- Utility room



Total floor area 76.9 sq.m. (827 sq.ft.) approx

This floor plan is for illustrative purposes only. It is not drawn to scale. Any measurements, floor areas (including any total floor area), openings and orientation are approximate. No details are guaranteed. They cannot be relied upon for any purpose and they do not form part of any agreement. No liability is taken for any error, omission or misstatement. A party must rely upon its own inspections. Powered by www.foresight.com



## House to sell?

Contact Quickmove for a free, no-obligation Part-Exchange valuation on this home. Enjoy a hassle-free move, with no estate agents' fees or solicitors to pay.

You even get to keep the keys to your existing property for 2 weeks after completion, so you can move out at your leisure.

## CONTACT US

01793 840917

advice@quickmoveproperties.co.uk

**Quickmove**  
PROPERTIES



The Property  
Ombudsman