

# Gainsborough, Lincolnshire, DN21

**Quickmove**  
PROPERTIES



£152,000



x 2



x 2

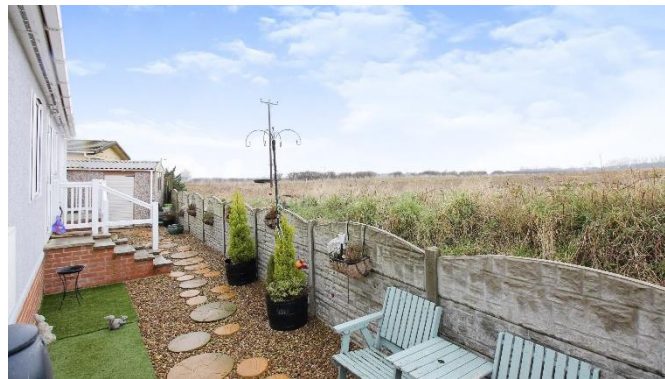
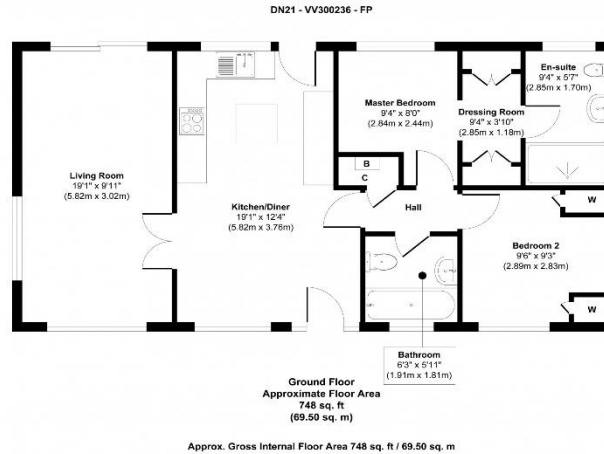
This pre-owned park home (40x20) is perfect for those looking for a detached, easy to maintain, bungalow-style retirement property. The home features an open plan kitchen and a separate living area with French doors, two bedrooms and two bathrooms. The home features countryside views, private garden, and a garage.

The park is surrounded by countryside with open views across the neighbouring fields. Local amenities in the village of Hemswell include a post office, shop, and antique market centre. Kirton in Lindsey and the Market Town of Gainsborough are only 6 miles away. Further a field are the historic Cathedral City of Lincoln and Scunthorpe.

Age restriction: Over 50's  
 Pet friendly: Yes  
 Site fees: £170.64  
 Residential license

### Key Features

- Countryside views
- Garage
- Garden shed
- Over 50's
- Part exchange available
- Pets welcome
- Pre-owned home
- Private parking
- Garage
- Village location



**House to sell?**  
 Hassle-free Property Part-Exchange is available from Quickmove Properties, with no estate agent fees, no solicitor's fees and no market uncertainty.

### CONTACT US

01793 840917

advice@quickmoveproperties.co.uk

