

Sandhurst, Berkshire, GU47

Quickmove
PROPERTIES



£85,000



A well-presented one double bedroom park home bungalow situated on this sought after residential park for the over 50's. The home boasts double glazing, gas central heating. Park homes are perfect for those looking for a detached, easy to maintain, bungalow-style retirement property.

Situated in Sandhurst in Berkshire near Camberley, the park benefits from convenient proximity to The Meadows with Marks & Spencer's and Tesco's superstores just 5 minutes' walk away. There is a selection of local shops on the doorstep, including a convenient supermarket. Camberley and Reading are nearby, both giving residents access to good high street shopping opportunities and excellent cinema-going facilities.

Age restriction: Over 50s

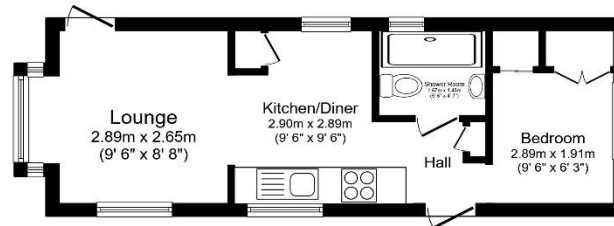
Pet friendly: Yes

Site fees: £204.85 per month

Residential license

Key Features

- Close to nearby amenities
- Community living
- Countryside location
- Detached park bungalow
- One double bedroom
- Over 50's
- Part exchange available
- Pre-owned park home
- Sought after residential park
- Well maintained home



Total floor area 25.7 sq.m. (277 sq.ft.) approx

This floor plan is for illustrative purposes only. It is not drawn to scale. Any measurements, floor areas (including any total floor area), openings and orientation are approximate. No details are guaranteed, they cannot be relied upon for any purpose and they do not form part of any agreement. No liability is taken for any error, omission or misstatement. A party must rely upon its own inspection(s).
Powered by www.foxgarden.com



House to sell?

Hassle-free Property Part-Exchange is available from Quickmove Properties, with no estate agent fees, no solicitor's fees and no market uncertainty.

CONTACT US

01793 840917

advice@quickmoveproperties.co.uk

Quickmove
PROPERTIES



The Property
Ombudsman