

Canvey Island, Essex, SS8



£350,000



This brand new, modern-furnished Omar Ikon park bungalow (50'x20') is perfect for those looking for a detached, easy to maintain, bungalow-style retirement property. The home features comfortable living and kitchen areas with large windows, modern furniture, and two double bedrooms.

Located right on the southeast coast, this development is located on the reclaimed island in the Thames estuary, Canvey Island, near Southend-on-Sea. The park is a short walk from the seafront where you can find pubs, restaurants, bars and the Leisure Island Fun Park. For golf lovers, the Castle Point Golf Course is 2.5 miles away, the Waterside Fare Leisure centre is also nearby, and a short drive away is the Wat Tyler Country Park.

Age restriction: Over 50s

Pet friendly: Yes

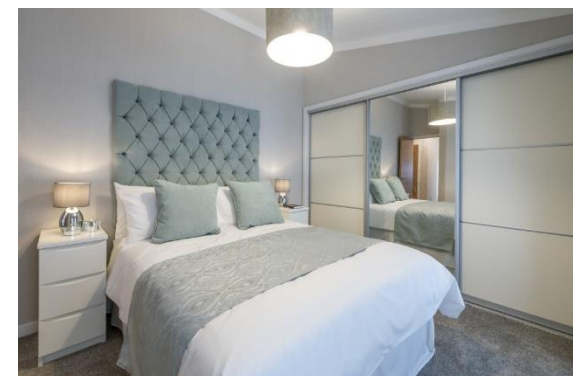
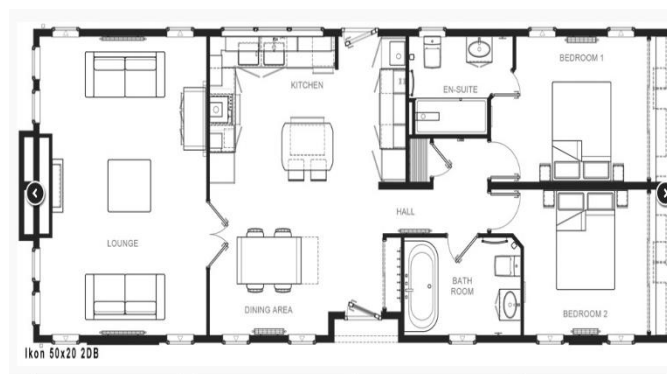
Site fees: £250.37 - £292.09 per month

Residential license

Stock images have been used, the home on-site may vary.

Key Features

- Brand new home
- Fully furnished
- RoyaleLife development
- Residential development
- Over 50s
- Pet friendly
- Coastal location
- All homes have decking
- Part exchange available
- Community living



House to sell?

Hassle-free Property Part-Exchange is available from Quickmove Properties, with no estate agent fees, no solicitor's fees and no market uncertainty.

CONTACT US

01793 840917

advice@quickmoveproperties.co.uk

Quickmove
PROPERTIES



The Property
Ombudsman