

Ipswich, Suffolk, IP6

Quickmove
PROPERTIES



£214,995

 x 2

 x 2

This brand new, modern-furnished Omar Westbury luxury park home (40'x20') is perfect for those looking for a detached, easy to maintain, bungalow-style retirement property. The home features two bedrooms, the master includes an en suite. The home is fully furnished in a traditional style and the kitchen includes integrated appliances.

The park is located in a beautiful setting with picturesque views over open countryside and woodland in the Heart of Suffolk. The park is nestled in an ancient great wood overlooking the historic village of Great Blakenham. Amenities including a pub, doctors, local shop and pharmacy can all be found within a few miles.

Age restriction: Over 45s

Pet friendly: Yes

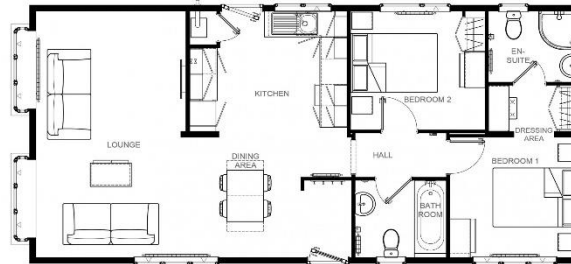
Site fees: £207.69 per month

Residential license

Stock images have been used, the home on-site may vary.

Key Features

- Brand new home
- Community Living
- Countryside Views
- Exceptionally High Specification
- Fully Furnished
- Integrated Appliances
- Part Exchange Available
- Pet-friendly
- Residential Development
- Village location



Westbury 40' x 20' 2DB



House to sell?

Hassle-free Property Part-Exchange is available from Quickmove Properties, with no estate agent fees, no solicitor's fees and no market uncertainty.

CONTACT US

01793 840917

advice@quickmoveproperties.co.uk

