

Bromyard, Herefordshire, HR7



£220,000



A luxurious OMAR Heritage (50'x22') park bungalow, with views of countryside and a pond. The home features a walk-in wardrobe and en-suite shower to the master bedroom, an impressive kitchen with SMEG American Style fridge/freezer and range cooker, a study, a further bathroom, and a small garden with a driveway to the side.

This residential park is built in the grounds of a historic castle. Located in a peaceful and breathtaking woodland setting, this stunning gated development is situated with south-facing views over the Bromyard Downs and Malvern Hills. The area is renowned for its scenic beauty and many ancient towns and cities, including Hereford, Worcester, Gloucester, and Leominster, all accessible by the local bus services in Bromyard.

Age restriction: Over 45s

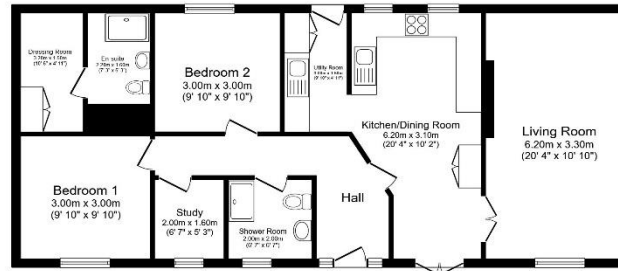
Pet friendly: Yes

Site fees: £242.77 per month

Residential license

Key Features

- Community Living
- Garden space
- Modern design
- Over 45's
- Parking Space
- Part Exchange Available
- Pet-friendly
- Pre-owned park home
- Residential Development
- Two Double Bedrooms



Total floor area 89.2 sq.m. (960 sq.ft.) approx.

This floor plan is for illustrative purposes only, it is not drawn to scale. Any measurements, floor areas (including any total floor area), openings and orientation are approximate. No details are guaranteed, they cannot be relied upon for any purpose and they do not form part of any agreement. No liability is taken for any error, omission or misstatement. A party must rely upon its own inspection(s). Powered by www.fcisagent.com



CONTACT US

01793 840917

advice@quickmoveproperties.co.uk

Quickmove
PROPERTIES

