

Ashford, Kent, TN27

Quickmove
PROPERTIES



Price as listed

 x 2

 x 1

This brand new, modern-furnished Stately Tredegar Elite (45'x14') luxury park home is perfect for those looking for a detached, easy to maintain, bungalow-style leisure property. The landscaped exterior boasts a large decking and parking. The home features a modern and spacious, open plan kitchen and living space with large windows. The kitchen has plenty of worktop space and integrated appliances.

This 12-month leisure development lies in a rural location, surrounded by woodland and agricultural land. The development has well-manicured gardens, communal spaces and fantastic countryside views. This development is located in the centre of the Garden of England and surrounded by beautiful countryside, picturesque villages, vineyards and castles.

Age restriction: Over 45s

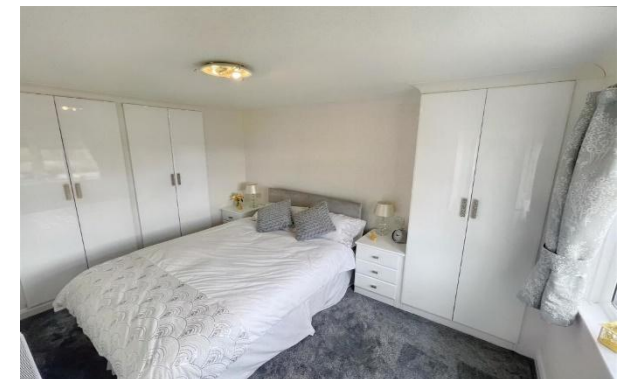
Pet friendly: Yes

Site fees (at time of listing): £350 per month

Leisure license

Key Features

- 12 Month Leisure Licence
- Brand new home
- Bus Stop Nearby
- CCTV Security System
- Countryside location
- Over 45s
- Village amenities nearby



House to sell?

Hassle-free Property Part-Exchange is available from Quickmove Properties, with no estate agent fees, no solicitor's fees and no market uncertainty.

CONTACT US

01793 840917

advice@quickmoveproperties.co.uk

Quickmove
PROPERTIES

