

Bromyard, Herefordshire, HR7



£174,995



This home is perfect for those looking for a detached, easy to maintain, bungalow style retirement property in a modern secluded development. This Willerby Charnwood park home features modern, comfortable furniture, two bedrooms and two bathrooms.

Located in a peaceful and breath-taking woodland setting, this stunning park is situated with south-facing views over the Bromyard Downs and Malvern Hills. The area is renowned for its scenic beauty and many ancient towns and cities, including Hereford, Worcester, Gloucester and Leominster, all accessible by the local bus services in Bromyard. To the west lies the Borders region of Wales, famous for its black and white villages.

Age restriction: Over 45s

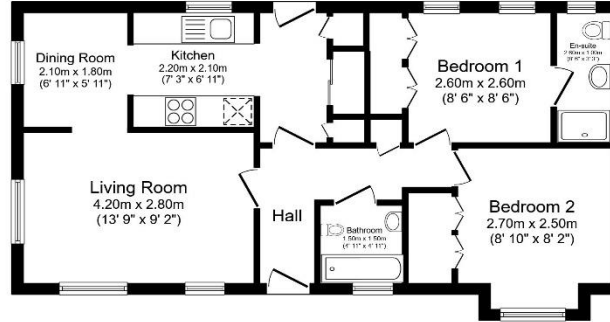
Pet friendly: Yes

Site fees: £182 per month

Residential license

Key Features

- Brand new home
- Community Living
- Exceptionally High Specification
- Fully Fitted Kitchen
- Fully Furnished
- Luxury 2 Bed Park Bungalow
- Parking Space
- Part Exchange Available
- Residential Park
- Retirement Property



Total floor area 56.4 sq.m. (607 sq.ft.) approx.

This floor plan is for illustrative purposes only, it is not drawn to scale. Any measurements, floor areas (including any total floor area), openings and orientation are approximate. No details are guaranteed, they cannot be relied upon for any purpose and they do not form part of any agreement. No liability is taken for any error, omission or misstatement. A party must rely upon its own inspection(s). Powered by www.floorplan.com



House to sell?

Hassle-free Property Part-Exchange is available from Quickmove Properties, with no estate agent fees, no solicitor's fees and no market uncertainty.

CONTACT US

01793 840917

advice@quickmoveproperties.co.uk

Quickmove
PROPERTIES

