

Cotswold Manor Country Park, Tewkesbury, Gloucestershire, GL20

Quickmove
PROPERTIES



£160,000



A superb two double bedroom detached park home (40'x20') located on the outskirts of this sought after residential park for the over 45's. The home offers an en-suite dressing area and shower room, modern kitchen, further bathroom and open plan living/dining room, driveway and garden.

Cotswold Manor Country Park features electric gates with coded keypad entry, CCTV, WI-FI and lighting. Each plot has its own allocated parking space. The park backs onto farmland with far-reaching countryside views, and the area offers so much to do and see. The park offers easy access to the M5, Tewkesbury, Cheltenham, Evesham and Stratford upon Avon.

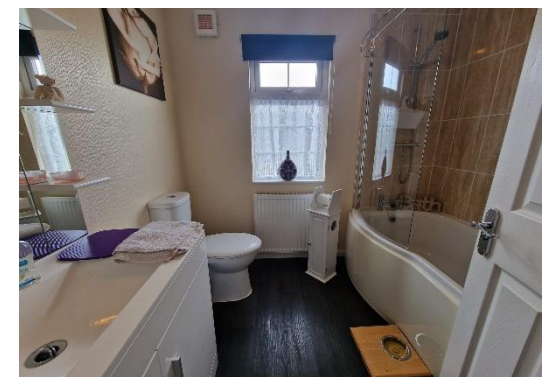
Age restriction: Over 45s

Pet friendly: Yes

Site fees (at time of listing): Approx £200 per month
Residential license

Key Features

- Countryside location
- Driveway and Rear Garden
- En-Suite Shower Room
- Gated and secure community
- Over 45's
- Part Exchange Available
- Pets welcome
- Pre-owned park home
- Sought After Residential Park
- Two Double Bedrooms



House to sell?

Contact Quickmove for a free, no-obligation Part-Exchange valuation on this home. Enjoy a hassle-free move, with no estate agents' fees or solicitors to pay. You even get to keep the keys to your existing property for 2 weeks after completion, so you can move out at your leisure.

CONTACT US

01793 840917

advice@quickmoveproperties.co.uk

Quickmove
PROPERTIES

