

Cider House Farm, Uckfield, East Sussex, TN22



£330,000



A pre-owned two-bedroom park home, built in 2016 by Stately Albion on this idyllic residential park in East Sussex. The home is on the best plot in the park and has an open plan kitchen, living and dining room, with French doors leading to a large decking with stunning countryside views.

Cider House Farm is set in an area of outstanding natural beauty, within 80 acres of parkland with woodland and a lake at the centre of the park. The park is well located for exploring the local area, with plenty of walking routes. Blackboys village with a popular gastro pub is 0.5 miles away. 3 miles away is Heathfield town which benefits from a Waitrose and Tesco.

Age restriction: Over 50s

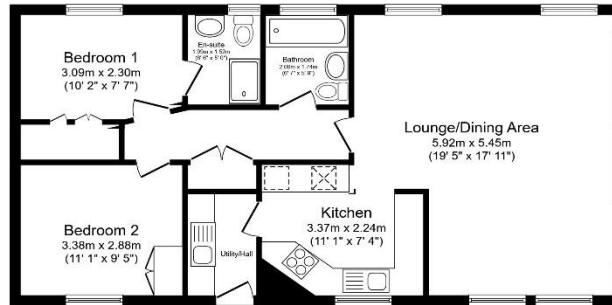
Pet friendly: 1 dog

Site fees (at time of listing): £240 per month

Residential license

Key Features

- Countryside Views
- Decked Patio Area
- Over 50's
- Part Exchange Available
- Pre-owned park home
- Residential Development
- Rural Location
- Two Double Bedrooms
- Open plan
- Two bedrooms



Total floor area 76.6 sq.m. (824 sq.ft.) approx

This floor plan is for illustrative purposes only, it is not drawn to scale. Any measurements, floor areas (including any total floor area), openings and orientation are approximate. No details are guaranteed, they cannot be relied upon for any purpose and they do not form part of any agreement. No liability is taken for any error, omission or misstatement. A party must rely on its own inspection(s). Powered by www.foxagent.com



House to sell?

Contact Quickmove for a free, no-obligation Part-Exchange valuation on this home. Enjoy a hassle-free move, with no estate agents' fees or solicitors to pay. You even get to keep the keys to your existing property for 2 weeks after completion, so you can move out at your leisure.

CONTACT US

01793 840917

advice@quickmoveproperties.co.uk

Quickmove
PROPERTIES



The Property
Ombudsman