

Royale Heights, Poole, Dorset, BH16



£215,000



This pre-owned, modern park bungalow (40'x14') is perfect for those looking for a detached, easy to maintain, bungalow style property. The well-presented home features an open-plan modern kitchen, dining and living area, two bedrooms and two bathrooms. The exterior includes a driveway and an easy-to-maintain garden area.

This home is located on a private, gated development located in a wooded elevated setting with a private fishing lake on site. The development is convenient due to easy access to neighbouring towns including the traditional town of Wimborne, Poole, and Bournemouth, as well as surrounding country parks including the New Forest and Hartland Moor National Nature Reserve which offer wonderful walking trails.

Age restriction: Over 45s

Pet friendly: Yes (2 per home)

Site fees: £300.78 per month

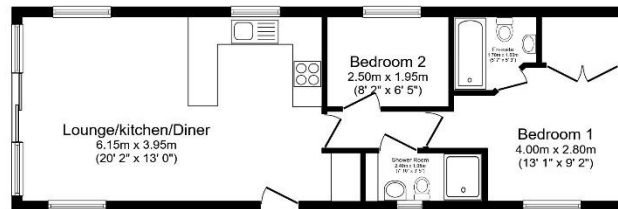
Residential license

House to sell?

Hassle-free Property Part-Exchange is available from Quickmove Properties, with no estate agent fees, no solicitor's fees and no market uncertainty.

Key Features

- Built in 2020
- Community Living
- Modern design
- Part Exchange Available
- Pre-owned park home
- Prestigious RoyaleLife development
- Gated Development
- Two Bedrooms
- Well maintained home



Total floor area 49.4 sq.m. (532 sq.ft.) approx.

This floor plan is for illustrative purposes only. It is not drawn to scale. Any measurements, floor areas (including any total floor area), openings and orientation are approximate. No details are guaranteed, they cannot be relied upon for any purpose and they do not form part of any agreement. No liability is taken for any error, omission or misstatement. A party must rely upon its own inspection(s). Powered by www.floorplan.com



CONTACT US

01793 840917

advice@quickmoveproperties.co.uk

Quickmove
PROPERTIES

