

Swanage, Dorset, BH19



£297,500



This brand new, modern-furnished Willerby Hazlewood (36'x20') luxury park home is perfect for those looking for a detached, easy to maintain, bungalow-style retirement property. The home features bay windows, and two bedrooms. The master bedroom includes an en suite and the kitchen includes integrated appliances.

This home is located on a brand-new development of around 100 residential park homes. The park is in a 14-acre setting among the Purbeck Hills with outstanding views of the beautiful Dorset countryside yet only 15 minutes walk to Swanage Town Centre and Beach. This residential park has been developed for people 50 and over and pets can be considered.

Age restriction: Over 50's

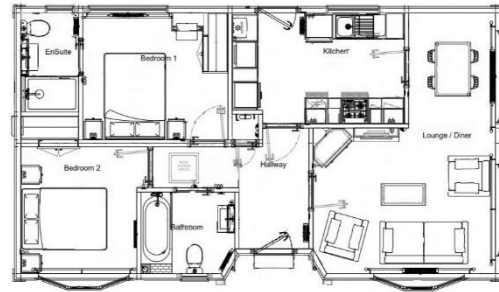
Pet friendly: Yes

Site fees: £260 per month

Residential license

Key Features

- Bay windows
- Brand new home
- Exceptionally High Specification
- Fully Furnished
- Lounge with fireplace
- Over 50's
- Part Exchange Available
- Residential Park
- Retirement Property



House to sell?

Hassle-free Property Part-Exchange is available from Quickmove Properties, with no estate agent fees, no solicitor's fees and no market uncertainty.

CONTACT US

01793 840917

advice@quickmoveproperties.co.uk

Quickmove
PROPERTIES

