

# Long Pightle Park, Rickmansworth, Hertfordshire, WD3

**Quickmove**  
PROPERTIES



£170,000

 x 2

 x 1



This pre-owned, well maintained Tingdene Hayden Classic (32'x20') park home is perfect for those looking for a detached, easy to maintain, bungalow-style property. The home features a fitted, modern kitchen, a living and dining area with a fireplace, two bedrooms and a family bathroom. The landscaped exterior boasts an enclosed garden area and a driveway.

Long Pightle Park is an established, family-run residential development of just 17 homes. The park is situated in the picturesque countryside hamlet location of Chandlers Cross, with ever-changing woodland views. Beautiful walks surround the park situated 3 miles from either Rickmansworth or Watford in Hertfordshire.

Age restriction: Over 50s

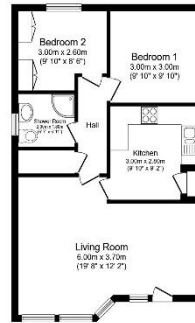
Pet friendly: Cats only

Site fees (at time of listing): TBC

Residential license

### Key Features

- Available to view
- Cat Friendly
- Community Living
- Enclosed Garden
- Over 50s
- Two Bedrooms
- Part Exchange Available
- Pre-owned park home
- Residential Development
- Well maintained home



Total floor area 47.5 sq.m. (619 sq.ft.) approx  
This floor plan is for illustrative purposes only. It is not drawn to scale. Any measurements, floor areas (including any total floor area), openings and placement are approximate. No calls are guaranteed, they cannot be relied upon for any purpose and they do not form part of any agreement. No liability is taken for any error, omission or misstatement. Agency must rely upon its own inspection. Powered by www.quickmove.com



**House to sell?**  
 Hassle-free Property Part-Exchange is available from Quickmove Properties, with no estate agent fees, no solicitor's fees and no market uncertainty.

### CONTACT US

01793 840917

advice@quickmoveproperties.co.uk

