

Limit Home Park, Berkhemsted, Hertfordshire, HP4



£240,000



A three-bedroom detached park home bungalow located on this sought-after residential park close to Berkhamstead in Hertfordshire. This well-presented 40'x20' home is in excellent decorative order and has been updated by the owner and has a generous plot and gardens externally.

Limit Home Park is situated close to the village of Northchurch. It is set on the hill on the south side of Chesham Vale, the park has outstanding views across the surrounding countryside. Close to the park in Northchurch is a shopping parade providing all basic requirements. The nearby town of Berkhamsted has a further selection of shops, amenities, and a full-day Saturday market.

Age restriction: Over 25s

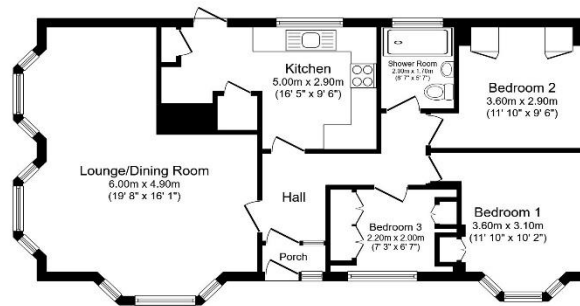
Site fees (at time of listing): £244.79 per month

Pet friendly: No

Residential license

Key Features

- Community Living
- Elevated plot
- Garden space
- Over 25s
- Part Exchange Available
- Pre-owned park home
- Residential Development
- Three bedrooms
- Village location



Total floor area 78.9 sq.m. (849 sq.ft.) approx.

This floor plan is for illustrative purposes only. It is not drawn to scale. Any measurements, floor areas (including any total floor area), openings and orientation are approximate. No details are guaranteed, they cannot be relied upon for any purpose and they do not form part of any agreement. No liability is taken for any error, omission or misstatement. A party must rely upon its own inspection(s). Powered by www.bossgroup.com



House to sell?

Contact Quickmove for a free, no-obligation Part-Exchange valuation on this home. Enjoy a hassle-free move, with no estate agents' fees or solicitors to pay. You even get to keep the keys to your existing property for 2 weeks after completion, so you can move out at your leisure.

CONTACT US

01793 840917

advice@quickmoveproperties.co.uk

Quickmove
PROPERTIES



The Property
Ombudsman