

# Hailsham, East Sussex, BN27

**Quickmove**  
PROPERTIES



£325,000



This brand new, modern-furnished luxury Cardigan Cottage (44'x20') park home is perfect for those looking for a detached, easy to maintain, bungalow-style property. The home has a fully integrated kitchen, dining area, separate living room with comfortable furniture, two bedrooms and two bathrooms. The home has its own driveway with additional shared visitor parking.

This established residential development located near Ashdown Forest is a picturesque and welcoming community. Exclusive for the over 50s, this park has all of the essential amenities, including a bus stop, shop and a recently refurbished pub. The park also has many communal areas with benches, a full size bowling green and a French boules area.

Age restriction: Over 50s

Pet friendly: Yes

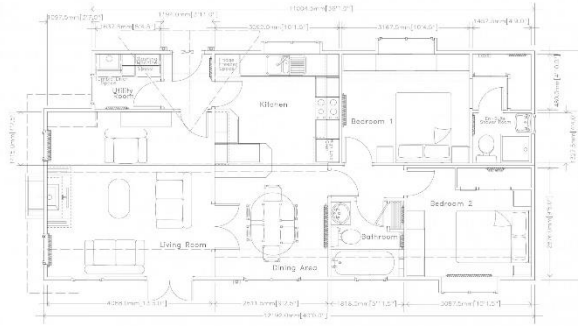
Site fees (at time of listing): £330.69 per month

Residential license

Stock images have been used, the home on site may vary.

### Key Features

- Brand new home
- Communal area
- Established Park
- Fully Furnished
- Over 50's
- Pet-friendly
- Private parking
- Pub on site
- Residential Development
- Shop on park



### House to sell?

Hassle-free Property Part-Exchange is available from Quickmove Properties, with no estate agent fees, no solicitor's fees and no market uncertainty.

### CONTACT US

01793 840917

advice@quickmoveproperties.co.uk

