

Windsor, Berkshire, SL4



£154,995



This brand new, fully-furnished Elegance Amber (42'x10') luxury park home is perfect for those looking for a detached, easy to maintain, bungalow-style retirement property. The home has a fully fitted kitchen, comfortable living area and two bedrooms.

This superb residential park is a well-established family park that offers the ultimate in residential home living and is ideally located in the Thames Valley, between Ascot, Windsor and Maidenhead and offers a rural retreat that's just a stone's throw from local amenities. The park has no age restriction, and amenities are close by, with a village store at the park entrance and a Tesco a few miles away.

Age restriction: None

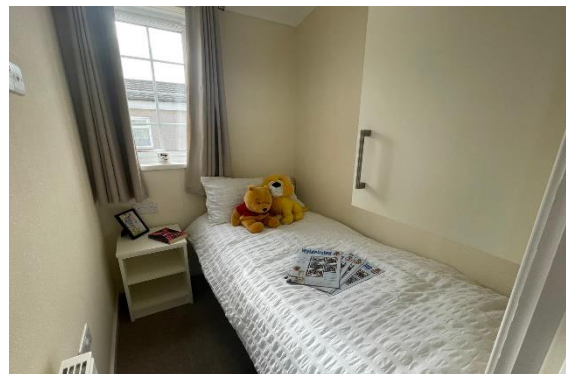
Pet friendly: Yes

Site fees: £230.00 per month

Residential license

Key Features

- Brand new home
- Community Living
- Excellent Transport Links
- Family Park
- Gas Central Heating
- Luxury 2 Bed Park Bungalow
- Outstanding Location
- Part Exchange Available
- Pet-friendly
- Residential Park



House to sell?

Hassle-free Property Part-Exchange is available from Quickmove Properties, with no estate agent fees, no solicitor's fees and no market uncertainty.

CONTACT US

01793 840917

advice@quickmoveproperties.co.uk

Quickmove
PROPERTIES

