

Doncaster, South Yorkshire, DN9

Quickmove
PROPERTIES



£185,000



This brand new, modern-furnished Omar Image (45x20) luxury park home is perfect for those looking for a detached, easy to maintain, bungalow style retirement property. The home features a modern kitchen with integrated appliances, a comfortable living area and two double bedrooms.

The development is well located for making the most of the Lincolnshire countryside while remaining well connected, with quick access to the North and South via the M18 just 15 minutes drive away. Scunthorpe and Doncaster are located 10 miles from the park, both of which offer large town facilities and amenities. The historic and picturesque town of Gainsborough is 8 miles from the park. A short 5-minute drive from the park in the village of Epsworth, with local pubs, a small supermarket and take-aways.

Age restriction: Over 50s

Site fees: £167 per month

Pet friendly: Yes

Residential licence

Stock images have been used, the home on-site will vary.

Key Features

- Brand new home
- Community Living
- Countryside location
- Fishing Lakes
- Fully Furnished
- Over 50's
- Parking for 2 cars
- Part Exchange Available
- Pet Friendly Park
- Residential Development

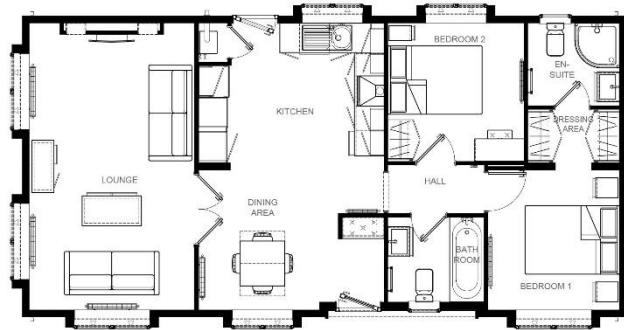
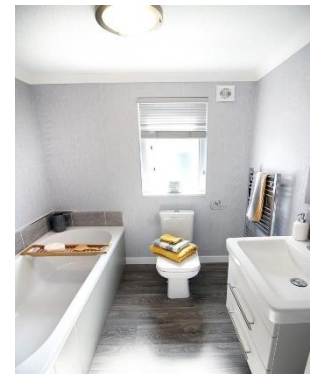


Image 40' x 20' 2DB



House to sell?

Hassle-free Property Part-Exchange is available from Quickmove Properties, with no estate agent fees, no solicitor's fees and no market uncertainty.

CONTACT US

01793 840917

advice@quickmoveproperties.co.uk

