

# Selby, Yorkshire, YO8



£238,000





Bungalow-style park homes are perfect for those looking for a detached, easy to maintain, bungalow style retirement property. This Prestige Sofia park home features comfortable furniture and a modern kitchen with integrated appliances, two bedrooms and two bathrooms, including an en-suite to the master bedroom. Each home comes with an 8'x10' shed.

This brand-new residential development is exclusive for the over 50s, offering friendly community living for like-minded people. The park features a gated entrance with CCTV, providing a safe environment that is not often found in urban areas. The park is in the process of expanding, with plans for a fishing lake and communal shops scheduled for next year.

Age restriction: Over 50s

Pet friendly: Yes

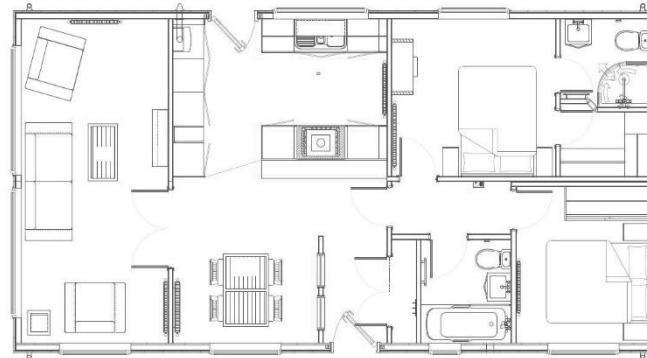
Site fees: £203 per month

Residential licence

Stock images have been used, the home on site may vary

### Key Features

- Brand new home
- CCTV Security System
- Coming soon
- Over 50's
- Part exchange available
- Pet-friendly
- Plots available
- Private
- Gated development
- Residential park home



### House to sell?

Hassle-free Property Part-Exchange is available from Quickmove Properties, with no estate agent fees, no solicitor's fees and no market uncertainty.

### CONTACT US

01793 840917

[advice@quickmoveproperties.co.uk](mailto:advice@quickmoveproperties.co.uk)

**Quickmove**  
PROPERTIES

