

# Stratford-Upon-Avon, Warwickshire, CV37

**Quickmove**  
PROPERTIES



£255,000

 x 2

 x 2

This brand new, modern furnished Omar Newmarket (40'x20') park home is perfect for those looking for a detached, easy to maintain, bungalow style retirement property. The home features private parking, a kitchen and dining area, comfortable living room, two bedrooms and two bathrooms. The garden area is neat and easy to maintain.

This fully residential pet-friendly development is exclusive for the over 50s. The park is private and gated to offer safe and secure living. Nestled on the edge of the beautiful Cotswolds, this brand new development has the stunning backdrop of rolling countryside, whilst boasting excellent transport routes to nearby Stratford-upon-Avon, the Cotswolds and Chipping Campden.

Age restriction: Over 50s

Pet friendly: Yes

Site fees (at time of listing): £229.37 pcm

Residential license

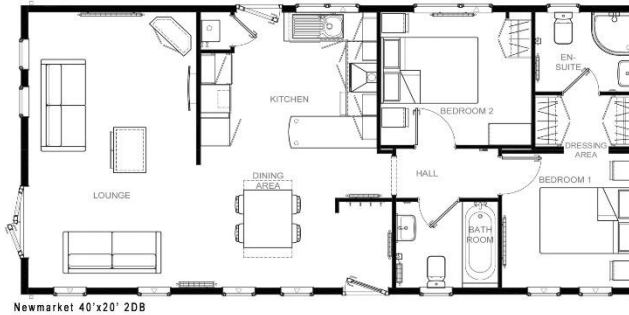
Stock images have been used, the home on site may vary.

### House to sell?

Hassle-free Property Part-Exchange is available from Quickmove Properties, with no estate agent fees, no solicitor's fees and no market uncertainty.

### Key Features

- Brand new home
- Bus stop at park entrance
- Close To Nearby Amenities
- Garden space
- Ideal retirement property
- Modern fitted kitchen and bathrooms
- Over 50s
- Part-Exchange available for price certainty
- Pet-friendly
- Private parking



## CONTACT US

01793 840917

[advice@quickmoveproperties.co.uk](mailto:advice@quickmoveproperties.co.uk)

**Quickmove**  
PROPERTIES

