

Kinderton Park, Middlewich, Cheshire, CW10

Quickmove
PROPERTIES



£165,000



This is a well presented two double bedroom (40'x20') Omar Colorado home situated on a generous corner plot ideal for those that enjoy gardening. The home has an en-suite shower and walk in wardrobe in bedroom 1, lounge and dining room, fitted kitchen, decked patio area, shed and 2 parking spaces.

Kinderton Park is ideally located in the beautiful Cheshire countryside. The grounds are landscaped and well maintained, providing a peaceful, and beautiful location. Nearby is the town of Middlewich, which lies on the confluence of three rivers, with three canals running through the town as well. Middlewich also has good motorway links to the nearby cities of Manchester and Liverpool.

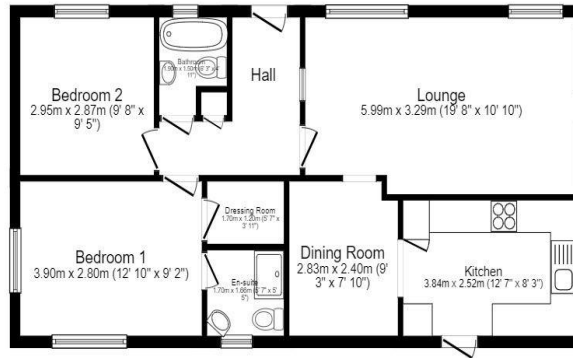
Age restriction: Over 45s

Pet friendly: Yes

Site fees (at time of listing): £201.15 per month
Residential license

Key Features

- Community Living
- Driveway
- Established Park
- Garden space
- Gated and secure community
- Over 45s
- Part Exchange Available
- Pet-friendly
- Pre-owned park home
- Well maintained home



House to sell?

Hassle-free Property Part-Exchange is available from Quickmove Properties, with no estate agent fees, no solicitor's fees and no market uncertainty.

CONTACT US

01793 840917

advice@quickmoveproperties.co.uk

