

# Yarwell Mill, Peterborough, Cambridgeshire, PE8



£295,000



x 2



x 2

This pre-owned park home is perfect for those looking for a detached, easy to maintain, bungalow style retirement property. This home is a stunning 50'x20' Stately Albion Chartwell which is positioned in a wonderful waterside location on this desirable residential park.

Yarwell Mill is a 27-acre residential development. It is a peaceful, gated location and the park benefits from boat moorings on the River Nene, its own private 5-acre lake and an abundance of fishing opportunities. Just a 15-minute drive from the park are the facilities and amenities of Peterborough. The countryside location offers great opportunities to explore walking trails and experience the wildlife surrounding the park.

Age restriction: Over 55's

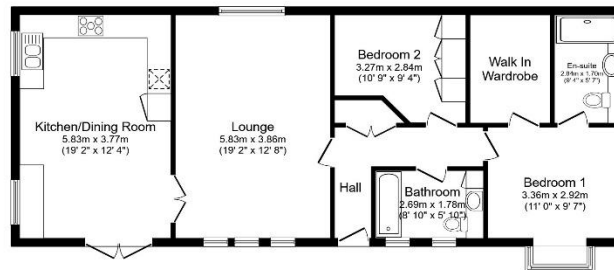
Pet friendly: Yes

Site fees: £343.39 per month

Residential license

## Key Features

- Countryside location
- Decking
- Driveway
- Garden space
- Lake on park
- Over 55's
- Part Exchange Available
- Pre-owned park home
- Two Bedrooms
- Waterside Property



Total floor area 88.8 sq.m. (956 sq.ft.) approx

This floor plan is for illustrative purposes only. It is not drawn to scale. Any measurements, floor areas (including any total floor area), openings and orientation are approximate. No details are guaranteed, they cannot be relied upon for any purpose and they do not form part of any agreement. No liability is taken for any error, omission or misstatement. A party must rely upon its own inspection(s). Powered by [www.housagent.com](http://www.housagent.com)



## House to sell?

Hassle-free Property Part-Exchange is available from Quickmove Properties, with no estate agent fees, no solicitor's fees and no market uncertainty.

## CONTACT US

01793 840917

[advice@quickmoveproperties.co.uk](mailto:advice@quickmoveproperties.co.uk)

**Quickmove**  
PROPERTIES

