

Chelmsford, Essex, CM2



£249,950



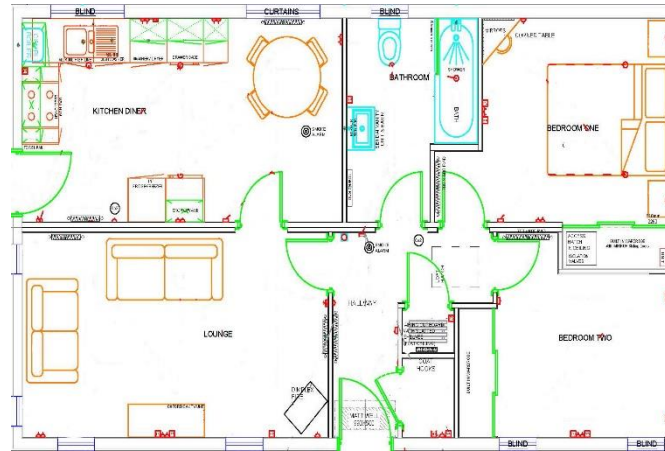
This fully furnished, brand new park home (36x20) is set in a pleasant retirement Park for the over 50s. The park is stunning and is surrounded by trees and hedgerows. This residential park gives you the opportunity to enjoy a new lifestyle with like-minded people in a safe and secure community.

The park is within easy reach of Chelmsford and the excellent commuter service into London. It combines the convenience of accessibility to the City for business and shopping trips with the pleasures of living in the heart of the picturesque Essex countryside. Shopping facilities are more than adequate together with a Doctor, Library and Dentist all within a 5 mile radius. Local sporting facilities include golf and swimming.

Age restriction: Over 50's
 Pet friendly: Yes (one per home)
 Site fees: £229 per month
 Residential license

Key Features

- Brand new home
- Coming soon
- Countryside location
- Fully fitted kitchen
- Fully furnished
- Over 50's
- Garden shed
- Part exchange available
- Residential park
- Retirement property



House to sell?

Hassle-free Property Part-Exchange is available from Quickmove Properties, with no estate agent fees, no solicitor's fees and no market uncertainty.

CONTACT US

01793 840917

advice@quickmoveproperties.co.uk

