

Forest Edge Court, Thetford, Norfolk, IP24

Quickmove
PROPERTIES



£180,000

 x 2

 x 2

A well-presented detached park home bungalow situated on this gated residential development for the over 45's. The home is a 45'x20' Omar Middleton boasting two double bedrooms, ensuite to the main bedroom and walk in wardrobe, a study, kitchen with utility room.

Forest Edge Court is within beautifully landscaped grounds, this RoyaleLife development is ideal for making the most of wonderful walking trails as well as local amenities. This stunning new residential development is located near Great Hockham, a highly sought-after village in Norfolk. This location offers residents the opportunity to enjoy a quintessentially English lifestyle with access to local amenities, walks and culture.

Age restriction: Over 45s

Pet friendly: Yes

Site fees: £245.23 per month

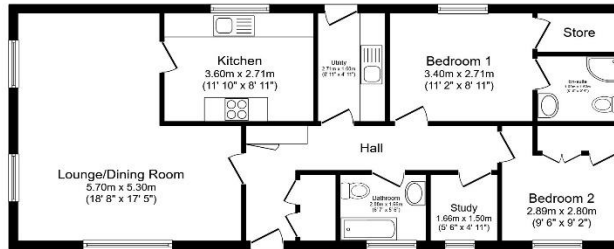
Residential license

House to sell?

Hassle-free Property Part-Exchange is available from Quickmove Properties, with no estate agent fees, no solicitor's fees and no market uncertainty.

Key Features

- Community Living
- Gated and secure community
- Outstanding Location
- Over 45s
- Part Exchange Available
- Pet-friendly
- Pre-owned park home
- RoyaleLife development
- Study
- Well maintained home



Total floor area 81.5 sq.m. (878 sq.ft.) approx

This floor plan is for illustrative purposes only. It is not drawn to scale. Any measurements, floor areas (including any total floor area), openings and orientation are approximate. No details are guaranteed, they cannot be relied upon for any purpose and they do not form part of any agreement. No liability is taken for any error, omission or misstatement. A party must rely upon its own inspection(s). Powered by www.houseagent.com



CONTACT US

01793 840917

advice@quickmoveproperties.co.uk

