

Westover Park, Whitland, South Wales, SA34

Quickmove
PROPERTIES



£160,000

 x 2

 x 2

This is an immaculate two double bedroom detached park home bungalow built by Willerby and is a 40'x20'. The home has a modern kitchen, a comfortable living and dining area, two double bedrooms and an en-suite shower room.

Westover park is a small, friendly community of retired residents. The park is close to the Welsh coastline, coastal walks to the Preseli mountains and the Brecon Beacons. Whitland is a small community village with local shops, doctors' surgery, pubs and restaurants, and train station. The nearby, historic market town of Carmarthen is just 15 minutes away and is purported to be the oldest town in Wales.

Age restriction: Over 50s

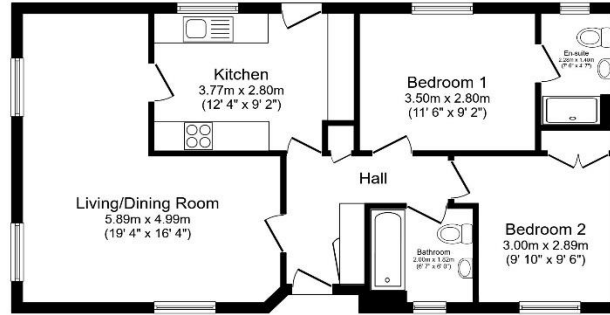
Pet friendly: Yes

Site fees: £212.05 per month, including water and sewage charges

Residential license

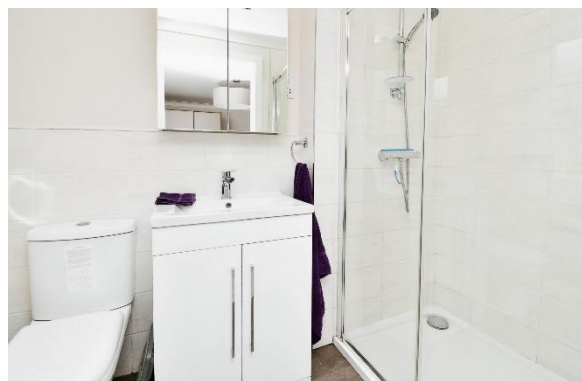
Key Features

- Established Park
- Excellent Transport Links
- Over 50s
- Part Exchange Available
- Pet-friendly
- Pre-owned park home
- Residential Development
- Semi-Rural Location
- Two Double Bedrooms
- Well maintained home



Total floor area 66.5 sq.m. (716 sq.ft.) approx

This floor plan is for illustrative purposes only. It is not drawn to scale. Any measurements, floor areas (including any total floor area), openings and orientation are approximate. No details are guaranteed, they cannot be relied upon for any purpose and they do not form part of any agreement. No liability is taken for any error, omission or misstatement. A party must rely upon its own inspection(s). Powered by www.housespart.com



House to sell?

Hassle-free Property Part-Exchange is available from Quickmove Properties, with no estate agent fees, no solicitor's fees and no market uncertainty.

CONTACT US

01793 840917

advice@quickmoveproperties.co.uk

Quickmove
PROPERTIES

