

Luton, Bedfordshire, LU1



£275,000



This pre-owned modern Omar (46'x20') park home is perfect for those looking for a detached, easy to maintain, bungalow-style property. The well-maintained home features a galley-style kitchen, a comfortable living room, two double bedrooms, a study, an en suite and a bathroom. The landscaped exterior boasts a driveway and an enclosed garden area with a patio.

This is a small established park of just 17 homes located on a quiet country lane. At the centre of the park is a small green onto which all the homes face. The village of Slip End is a short drive away, here you can find a beautiful church, a general store and two pubs offering home-cooked food.

Age restriction: Over 50s

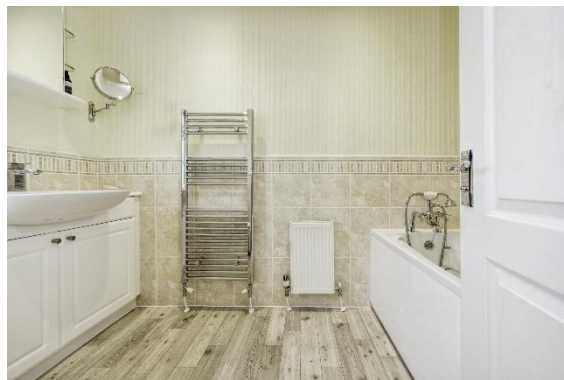
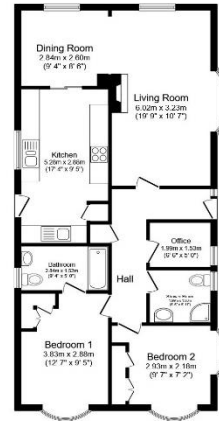
Pet friendly: Yes

Site fees (at time of listing): £254 per month

Residential license

Key Features

- Community Living
- Garden space
- Over 50s
- Part Exchange Available
- Pet-friendly
- Pre-owned park home
- Rear Patio
- Residential Development
- Two Double Bedrooms
- Well maintained home



House to sell?

Hassle-free Property Part-Exchange is available from Quickmove Properties, with no estate agent fees, no solicitor's fees and no market uncertainty.

CONTACT US

01793 840917

advice@quickmoveproperties.co.uk

