

# Mansfield, Nottingham, NG19

**Quickmove**  
PROPERTIES



Price as listed





This brand new, modern-furnished ABI Ingleton (40'x13') luxury park home is perfect for those looking for a detached, easy to maintain, bungalow-style property. The home features an open plan layout, two bedrooms, an en suite and a bathroom with two parking spaces outside, with additional options for decking and paving.

This 12-month leisure development of 78 lodges is located in a lovely semi-rural location, one mile from Mansfield. Set in 7 acres, the park features a launderette, children's play area and fishing lake. Dogs are welcome and a bus stop is at the entrance of the park. There is also CCTV and a barrier at the park entrance for added security. At the back of the park is the Maun Valley Nature trail which takes you along the river and into Sherwood.

The park is less than one mile from Mansfield town centre and within walking distance of a pub and shops. Sherwood Forest is 5 miles away, a national nature reserve over 1,000 acres. Nottingham city centre is 15 miles away where you can find high street shops and city amenities.

Age restriction: None

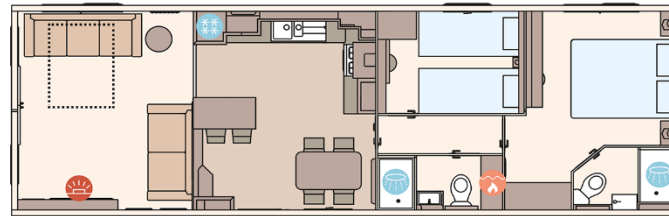
Pet friendly: Yes

Site fees: £2,732 per year

Stock images have been used, the home on site may vary.

## Key Features

- 12 Month Leisure Licence
- Brand new home
- CCTV at park entrance
- Fully Furnished
- House buying service
- Integrated Appliances
- No age restriction
- Parking for two cars
- Pet-Friendly
- Semi-Rural Location



### House to sell?

Hassle-free Property Part-Exchange is available from Quickmove Properties, with no estate agent fees, no solicitor's fees and no market uncertainty.

## CONTACT US

01793 840917

[advice@quickmoveproperties.co.uk](mailto:advice@quickmoveproperties.co.uk)

**Quickmove**  
PROPERTIES

